

**ILLINOIS STATE BOARD OF EDUCATION**  
100 N. First Street  
Springfield, Illinois

**January 13-14, 2010**

**NOTE: Staff presentations and detailed Board discussion typically take place during Committee meetings prior to State Board action in the plenary session.**

**All open meetings will be audio cast on the Internet at: [www.isbe.net](http://www.isbe.net)**

**WEDNESDAY, JANUARY 13, 2010**

**10:15 a.m. Governmental Relations Committee of the Whole**  
Board Room, 4th Floor

**Noon Governor's State of the State Address**  
(Some Board Members may attend.)

**\*1:15 p.m. Finance & Audit Committee of the Whole** (*immediately following State of the State Address*)  
Board Room, 4th Floor

**\*4:00 p.m. Ad Hoc Rules Committee of the Whole**  
Board Room, 4th Floor

\* The meeting will begin at the conclusion of the previous session.

**THURSDAY, JANUARY 14, 2010**

**8:30 a.m. Education Policy Planning Committee of the Whole**  
Board Room, 4th Floor

**\*10:15 a.m. ISBE Plenary Session**  
Board Room, 4th Floor

\* The meeting will begin at the conclusion of the previous session.

All State Board of Education meetings listed on this agenda will be accessible to persons with disabilities. Persons planning to attend who need special accommodations should contact the Board office no later than the date prior to the meeting. Contact the Superintendent's office at the State Board of Education, Phone: 217-782-2221; TTY/TDD: 217-782-1900; Fax: 217-785-3972.

**NOTE:** Chairman Ruiz may call to order the Board's plenary session early for the sole purpose of hearing a motion to go into closed session. In such case, the plenary session will reconvene for action items at the time posted. Chairman Ruiz may also call for a break in the plenary session on Thursday at which time the Board will go into closed session.

**ILLINOIS STATE BOARD OF EDUCATION  
PLENARY SESSION  
100 North First Street, Springfield, Illinois  
Board Room, 4<sup>th</sup> Floor  
January 14, 2010  
10:15 a.m.**

(This meeting will begin immediately following the previous session.)

<b>NOTE: Staff presentations and detailed Board discussion typically take place during Committee meetings prior to State Board action in the plenary session. All meetings will be audio cast on the Internet at <a href="http://www.isbe.net">www.isbe.net</a></b>
---

**I. Roll Call/Pledge of Allegiance**

- A. Consideration of and Possible Actions on Any Requests for Participation in Meeting by Other Means

**II. Ceremonial Swearing-in of New State Board of Education Members**      **10:15 – 10:25 a.m.**

**III. Public Participation**      **10:25 – 10:55 a.m.**

**IV. Resolutions & Recognition**

- A. Joyce Karon, Former State Board of Education Member

**V. Superintendent's Report**

**\* Consent Agenda**

All action consideration items listed with an asterisk (\*) are considered to be routine and will be enacted in one motion and vote. Any board member who wishes separate discussion on any item listed on the consent agenda may remove that item from the consent agenda, in which event, the item will be considered in its normal sequence.

**Action Considerations**

consent agenda items: **10:55 – 11:05 a.m.**

- A. \*Approval of Minutes
  - 1. December 15, 2009 (***Plenary Packet pp. 5-13***)
  - 2. Violence in Schools Work Study, December 16, 2009 (***Plenary Packet pp. 14-17***)
- B. \*Rules for Initial Review
  - 1. Part 180 (Health/Life Safety Code for Public Schools) (***Rules Committee Packet pp. 4-11***)
- C. \*Rules for Adoption
  - 1. Part 1 (Public Schools Evaluation, Recognition and Supervision) (***Rules Packet pp. 12-53***)
  - 2. Part 151 (School Construction) (***Rules Committee Packet pp. 54-75***)
  - 3. Part 252 (Driver Education) (***Rules Committee Packet pp. 76-82***)
- D. \*Recommended Denials of District Requests for Waivers of Transitional Bilingual Education Rules
  - 1. Arlington Heights School District #25 (***Gov't Relations Packet pp. 44-49***)
  - 2. School District U-46 (Elgin) (***Gov't Relations Packet pp. 50-56***)
  - 3. Kildeer Countryside CCSD #96 (***Gov't Relations Packet pp. 57-69***)
- E. \*Legislative Proposals (***Gov't Relations Packet pp. 5-43***)
- F. \*Spring Mandate Waiver Report (***Gov't Relations Packet pp. )***
- G. \*Teacher Certification Board Recommendation: McKendree University (***EPPC Packet pp. 4-5***)
- H. \*Approval of Race To The Top Application (***EPPC Packet p. 67***)

**End of Consent Agenda**

- I. Approval of FY11 State Board Budget Recommendation (***Finance & Audit Packet pp. 4- ) 11:05 – 11:25 a.m.***

**VI. New Business**

**11:25 – 11:30 a.m.**

**VII. Announcements and Reports**

**11:30 a.m. – 12:20 p.m.**

- A. IBHE Liaison Report (*Dr. Proshanta Nandi*) **11:30 – 11:40 a.m.**
- B. P-20 Council Liaison Report (*Joyce Karon*) **11:40 – 11:50 a.m.**
- C. Superintendent's/Senior Staff Announcements **11:50 a.m. – 12:00 p.m.**
- D. Chairman's Report **12:00 – 12:10 p.m.**
- E. Member Reports **12:10 – 12:20 p.m.**

**VIII. Information Items**

- A. ISBE Fiscal & Administrative Monthly Reports (*Plenary pp. 18-46*)

**IX. Adjourn**

# Illinois State Board of Education Resolution



Honoring  
**Joyce E. Karon**  
January 2010

**WHEREAS, Joyce Karon** earned a Bachelor's Degree from the University of Iowa and a Master's Degree in Instructional Media Management and Library Science from National Louis University; and

**WHEREAS, Joyce** was formerly an adjunct faculty member at Northern Illinois University and an independent consultant for school and public libraries. As a library-media specialist in the Barrington schools, she designed and implemented library media curriculum, created staff development activities to integrate technology into classrooms, chaired local and state committees which focused on education and technology, served on state library task forces, and worked on numerous referenda; and

**WHEREAS,** since January 2003, **Joyce** has been a dedicated and engaged member of the Illinois State Board of Education, having attended 102 out of 104 meetings during her seven years with the Board. She has been a passionate advocate for education, particularly computer literacy and career and technical education. **Joyce** adeptly dissects education policy, always considering how it might impact classroom instruction and student performance. In taking over the reigns as Chair of the Finance and Audit Committee of the Whole in June 2009 – during a tumultuous budget time - **Joyce's** dedication and leadership has been a saving grace to her fellow members. Her graciousness and sense of humor set the tone for many finance committee discussions and budget hearings; and

**WHEREAS,** also committing her time and expertise to the National Association of State Boards of Education (NASBE), **Joyce** served on the 2004 Study Group on Secondary Literacy and the 2006 Study Group on Early Childhood Education. In 2008 she traveled to Capitol Hill for the NASBE Legislative Conference; and

**WHEREAS,** in the fall of 2006, **Joyce** was appointed to serve as the ISBE Liaison to the Illinois Board of Higher Education. That experience makes her an excellent choice to serve on the Governor's P-20 Advisory Council; and

**WHEREAS, Joyce** received the 2009 Vision in Education Award from ED-RED, a coalition of more than 100 school districts in the suburban Chicago area in which she resides. **Joyce's** constant focus on the welfare of all children, her broad range of interests, her cool, level head and warm heart will be missed more than words can say; now

**THEREFORE, BE IT RESOLVED** THAT THE ILLINOIS STATE BOARD OF EDUCATION extends its deepest appreciation and gratitude to **Joyce E. Karon** on this the 14<sup>th</sup> day of January, 2010, for her extraordinary years of service to the children of Illinois as well as the added nourishment to the staff at ISBE through her continued contributions of baked goods and delivery of chocolate.

---

Jesse H. Ruiz, Chairman

---

Christopher J. Ward, Vice Chairman

---

Vinni M. Hall, Secretary

---

James W. Baumann, Member

---

Andrea S. Brown, Member

---

David L. Fields, Member

---

Steven R. Gilford, Member

---

Lanita J. Koster, Member

---

Melinda A. LaBarre, Member

**Illinois State Board of Education Meeting  
December 17, 2009  
Illinois State Board of Education  
100 North First Street  
Springfield, Illinois**

**ROLL CALL**

Dr. Chris Ward, Vice-Chairman, called the meeting to order at 10:05 a.m. Vice-Chairman Ward asked, Ms. Jean Ladage to call the roll. A quorum was present

**Members Present:**

Mr. Jesse Ruiz, Chairman  
Dr. Christopher Ward, Vice Chairman  
Dr. Vinni Hall, Secretary  
Dr. Andrea Brown  
Dr. David Fields  
Ms. Joyce Karon  
Ms. Lanita Koster

**Members Absent:**

(Mr. Ruiz arrived at 12:55 p.m.)

**PUBLIC  
PARTICIPATION**

Vice-Chairman Ward indicated that anyone wishing to speak regarding the Fort Bowman Charter Appeal will be called upon during Agenda Item III.

**Kristina Mallon, Donna Durbin and Nancy Blume** from Community High School District #94 in West Chicago thanked the Board for their support of Math and Career and Technical Education (CTE). Their school is a one-school high school district that serves about 2,100 diverse students, 48% Caucasian; 44% Hispanic, a 25% low income rate and a 9% limited English proficiency rate. The Math and CTE Program follows the National Research Center for Technical Education-Seven Lesson Plan. The program pairs a CTE teacher with a math teacher and ten lesson plans. The purpose of the program is to increase student retention and achievement rate in math, both within the math classroom and beyond. The students were tested at the start and at the end of the ten-lesson plan. Ms. Mallon stated that students either improved or stayed the same; none of them went down on the post test. She commented that they will be sharing their CTE program with their colleagues in Chicago so it can be implemented in other schools.

Superintendent Koch suggested that Ms. Mallon and Ms. Durbin work with the Illinois Council for Economic Education. Dr. Koch commented that he would also be glad to share the link to the proposed international common core standards, and that he would be very interested in their feedback.

**Laurene Heybach** from the Chicago Coalition for the Homeless spoke in support of \$4 million dollars for FY2011 homeless education. Ms. Heybach pointed out that there has been a 77% increase in the number of homeless school children since last year at this time. The need for assistance to school districts serving students in homeless situations is critical. Ms. Heybach asked that the Board please look seriously at enforcing the federal and state laws of homeless children and to continue to allocate funding for homeless school children.

**FORT BOWMAN  
ACADEMY  
CHARTER  
HEARING**

Dr. Ward asked Superintendent Koch to update the Board on the Appeal of the Fort Bowman Academy Charter School Renewal.

**Dr. Koch** stated that the Fort Bowman Academy Charter School submitted a request for a three-year charter renewal to Cahokia Unit School District (USD) #187 in December 2008. Cahokia USD #187 denied the renewal request on February 2, 2009. Fort Bowman Academy Charter School submitted a timely appeal of the denial to the Illinois State Board of Education (Agency). Superintendent Koch indicated that he upheld the Cahokia USD #187 decision to deny the proposal in accordance with the Illinois Administrative Review Law. Fort Bowman Academy Charter School (Ft. Bowman) filed for administrative review.

St. Clair County Court remanded the matter to the Illinois State Board of Education for further proceedings to make a full determination.

The Agency findings have been that Ft. Bowman committed material violations of its contract by not holding monthly board meetings and not filing its board members' Statements of Economic Interest with the St. Clair County Clerk's Office. Ft. Bowman has not made reasonable progress toward achievement of content standards nor pupil performance standards identified in the charter. It was also unclear if Ft. Bowman meets generally accepted standards of fiscal management. The Agency did find that Ft. Bowman failed to comply with the requirements of the Open Meetings Act, provisions to provide special education services to its students, and other laws to which charter schools are not exempt.

**Mark Scoggins, Attorney for Ft. Bowman**, stated that he has been submitting information to the Agency at the Agency's request but had not seen the Agency's recommendation to the State Board.

He pointed out that issues previously raised have been briefed by the counsel for the Cahokia CUSD #187 and himself. There are ample briefs on each point raised by the school district and both sides have had an opportunity to respond.

Mr. Scoggins introduced **Beth Peeples, Dean of Ft. Bowman, and teachers Randy Dirk and Karen Hunt**. The group shared a PowerPoint, discussed the school structure, daily routine and expectations of the students. (*PowerPoint attached.*)

Mr. Scoggins closed by stating that Ft. Bowman has been in existence for ten years, with three previous renewals. The original administrator and founders are still at the school. The local school board has provided glowing letters as late as 2007. Mr. Scoggins thanked the Board for their patience and time.

**General Counsel for the State Board, Darren Reisberg** responded that he will direct the State Board not to consider any of the information submitted by counsel for the district within the last week (given Mr. Scoggins' argument that he had no ability to respond); however, Mr. Reisberg emphasized that the State Superintendent's recommendation to the Board has not changed. Mr. Scoggins responded with appreciation to Mr. Reisberg's instruction to the Board.

**Sean Cronin, Attorney for Cahokia Unit School District #187**, who was accompanied by **Arnett Harvey, Chief Financial Officer for Cahokia School District**, asked if the Board had further questions. Mr. Cronin stated that they had previously submitted their evidence to the Board. They urged the Board to adopt the decision of State Superintendent Koch.

Mr. Harvey shared that Cahokia would receive an annual report following their audit. Mr. Harvey added that it has been difficult to adhere to state standards on reporting due to the need to retrieve and verify information from Ft. Bowman. Mr. Cronin added that he would like the Board to consider the new handout as well. Cahokia School District stands by the evidence they have previously submitted to the Board. The additional brief is merely supplemental. He asked that the Board adopt the decision of State Superintendent Koch.

**Mr. Ed Geppert, President of the Illinois Federation of Teachers (IFT)** spoke in support of the non-renewal of the Ft. Bowman charter. Mr. Geppert stated that the IFT believes that Ft. Bowman fails to live up to the principles of being in the best interest of the students of the community of Cahokia. Mr. Geppert shared with the Board a handout confirming IFT's list of reasons (*attached*). On behalf of IFT and Cahokia Federation of Teachers Local #1272, representing all professionals and support staff and employees, Mr. Geppert asked

the Board to deny the renewal of the Ft. Bowman Academy charter.

Beth Peeples spoke again, adding that Ft. Bowman was asked to turn in daily attendance by the fifth of every month and they have met that request. In response to the statements surrounding audits, they submitted basic average audits to Cahokia School District as well as the state. Cahokia School District wanted to bring in a team of auditors, but Ft. Bowman does not have the space to accommodate a full audit team. Ft. Bowman and their attorney asked the district in writing what records they would like to see, but no response was received.

Teacher Karen Hunt also spoke again and commented that The School of Choice is actually Fort Bowman Academy Charter School in a different location run by Cahokia Unit School District. The relationship with Cahokia School District was always good until a change of administration at the school district.

**RESOLUTIONS &  
RECOGNITION**

Dr. Hall moved that the State Board of Education adopt the resolutions recognizing Fred Huddleston, the 2009 Burroughs Outstanding School Board President; Kevin Rutter, the 2009-2010 Illinois Teacher of the Year; Arthur Wachholz, the 2009 Illinois recipient of the Milken National Educator Award; and the resolutions for Cohorts 3, 4, & 5 graduates of the Bilingual Transition to Teaching Program. Dr. Ward seconded the motion and it passed unanimously with a voice vote.

Kevin Rutter, 2009-2010 Illinois Teacher of the Year, thanked the Board and Superintendent Koch for bestowing on him such an honor. Mr. Rutter also thanked the many kind, supportive and generous people in his life. He shared his educational experiences as a teacher and information on a program called the Carl Shurz Business and Finance Career Academy program in which he serves as coordinator and lead teacher.

Arthur Walchholz, 2009 Illinois recipient of the Milken National Educator Award, shared with the Board his journey to become a teacher. Mr. Walchholz thanked the Board and commented on the positive influence it has had on the students and his school.

**CLOSED SESSION  
MOTION**

Ms. Karon moved that the Board enter into closed session under the exceptions set forth in the Open Meetings Act of the State of Illinois as follows:

Section c 1 for the purpose of considering the appointment, employment, compensation, performance or dismissal of an employee; and

Section c 11 for the purpose of considering pending or probable litigation against or affecting the Board, and

Section c 21 for the purpose of discussing minutes of meetings lawfully closed under the Open Meetings Act.

She further moved that the Board may invite anyone they wish to have included in this closed session. Dr. Fields seconded the motion and it carried with a unanimous roll call vote.

The Board recessed at 11:35 a.m.

**RECONVENE**

Plenary session was reconvened at 12:55 p.m. Chairman Ruiz joined the Board for the remainder of the meeting.

**CONSENT  
AGENDA**

**Consent Agenda Motion:**

Dr. Fields moved that the State Board of Education hereby approves the consent agenda items, with the exception of agenda item V.C.3. Classroom Cubed Grant which will not be acted upon at this time. Dr. Hall abstained from agenda item H. Teacher Certification Board Recommendations but wished to vote yes on the remainder of the consent agenda items.

Ms. Koster seconded the motion and it passed with a unanimous roll call vote.

The following motions were approved by action taken in the consent agenda motion.

**Approval of Minutes**

The State Board of Education hereby approves the minutes for the October 29, 2009 meeting.

**Rules for Initial Review**

**Part 35 (Mentoring Program for New Principals)**

The State Board of Education hereby authorizes solicitation of public comment on the proposed rulemaking Mentoring Program for New Principals (23 Illinois Administrative Code 35) including publication of the proposed amendments in the Illinois Register.

**Part 145 (Temporary Relocation Expenses)**

The State Board of Education hereby authorizes solicitation of public comment on the proposed rulemaking for Temporary Relocation Expenses (23 Illinois Administrative Code 145) including publication of the proposed amendments in the Illinois Register.

**Contracts & Grants Over \$1 Million**

**Illinois Violence Prevention Authority Grant for  
Social Emotional Professional Development**

The State Board of Education hereby authorizes Agency staff to enter into a continuation grant agreement with the Illinois Violence Prevention Authority through December 31, 2010 for the purpose of providing social and emotional learning professional development to schools throughout the state.

**RFSP for General State Aid ARRA Audit**

The State Board hereby authorizes the Agency staff to release a Request for Sealed Proposals to find one or more certified public accounting firms to perform services and to enter into a contract with the successful bidders through September 30, 2010 not to exceed \$2,500,000 in total. The resulting contract will have two possible renewal terms.

**Financial Status of Lemont-Bromberek Community School #113A**

The State Board of Education accepts the State Superintendent's Findings of Fact and recommendation, that the denial of the Ft. Bowman Academy Charter School renewal proposal by Cahokia Unit School District 197 be upheld by the Illinois State Board of Education and authorizes the Chairman of the State Board of Education to execute the Determination attached to the State Superintendent's Findings of Fact and Recommendation.

**Private Business and Vocational Schools Advisory Council**

The State Board of Education hereby approves the following appointments to the Private Business and Vocational Schools Advisory Council:

Chairperson selected by the membership of the council: To Be Determined

Owner or chief managing employee from a home study school: Grace Jenkins,  
President and CEO, National Able Network

Attorney from the Office of the Attorney General: Gil Fergus, Deputy Chief of the  
Consumer Protection Division

**Charter School Annual Report**

The State Board approves the Charter School Annual Report as presented at the December Board Meeting.

### Draft State Board of Education Annual Report

The Illinois State of Education hereby approves the Draft 2009 Annual Report.

### Teacher Certification Board Recommendations

The State Board of Education hereby adopts the following motions

#### Motion 1

In accordance with Section 25.127(j)(1)(A) of the State Board's administrative rules on review of individual programs, the State Board awards **continuing approval** for **Bradley University** for the specific professional education preparation programs listed above, as they meet the applicable Illinois content area standards.

#### Motion 2

In accordance with Section 25.145 of the State Board's administrative rules on review of new programs, the State Board of Education **provisionally approves Benedictine University's Music Education** program thereby authorizing the university to conduct the program and to recommend candidates for certification by entitlement until the time of the institution's next accreditation review.

#### Motion 3

In accordance with Section 25.145 of the State Board's administrative rules on review of new programs, the State Board of Education provisionally approves the University of Illinois Elementary Education program awards **provisionally approves the University of Illinois Elementary Education** program, thereby authorizing the university to conduct the program and to recommend candidates for certification by entitlement until the time of the institutions next accreditation review.

### Illinois Certification Testing System Basic Skills Pass Rate

The State Board of Education hereby sets the passing scores for the sub tests of the Basic Skills test as follows:

Basic Skills Writing sub test passing score is set at a scaled score of 8; Reading passing score 30; Language Arts passing score 27; and Mathematics passing score 21.

### Cumulative Waiver Report

The State Board authorizes transmittal to the General Assembly before February 1, 2010, of the 2010 Cumulative Waiver Report, which includes a recommendation that the General Assembly introduce legislation to eliminate the fee limit of \$50 in Section 27-24.2 of the School Code, thus allowing districts to set the fee in response to local conditions, with the stipulation that the district set a fee only after providing appropriate advance notices and holding a public hearing in order to take comments from parents, other community members, and affected teachers and staff members.

### Legislative Proposals

The State Board of Education hereby authorizes Agency staff to continue working with stakeholders and then move forward with the following legislative proposals in the spring 2010 legislative session:

- Performance Evaluation Act/Human Capital Reform;
- Underperforming Schools Incentive;
- Alternative Certification; and,
- Anti-Bullying Legislation

### **Approval of 2010 Board Calendar Revisions**

The State Board of Education hereby approves the following changes to the 2010 Calendar of Board meetings:

- The January 2010 meeting shall be changed to January 13-14 to coincide with the Governor's State of the State address.
- The March 2010 meeting shall be changed to March 24-25 to avoid a conflict with NASBE meetings.
- The October 2010 meeting shall be changed to October 28-29 to coincide with the Annual Superintendent's Conference dates.

### **Adoption of 403b Retirement Plan**

The State Board of Education adopts the following resolutions:

#### **RESOLUTION TO ADOPT WRITTEN § 403(b) PLAN**

Upon motion duly made, the following resolution is adopted by the Illinois State Board of Education:

**WHEREAS**, Internal Revenue Code ("Code") Section 403(b) and the accompanying Internal Revenue Service Final Regulations ("Regulations") require employers that maintain a 403(b) program to establish a written plan;

**WHEREAS**, in Internal Revenue Service Notice 2009-3, the IRS extended the deadline to establish a written plan to December 31, 2009; and

**WHEREAS**, the Illinois State Board of Education desires to adopt a written Section 403(b) Plan for the benefit of eligible employees in order to comply with the Code and Regulations, and the requirements of IRS Notice 2009-3.

**NOW, THEREFORE, BE IT RESOLVED**, effective January 1, 2009, the Illinois State Board of Education hereby adopts the attached Illinois State Board of Education 403(b) Plan and Adoption Agreement for eligible employees;

**FURTHER RESOLVED**, that this Illinois State Board of Education 403(b) Plan and Adoption Agreement shall supersede and replace prior Code Section 403(b) plans and programs previously established by the Illinois State Board of Education, if any.

#### **RESOLUTION TO FREEZE § 403(b) PLAN**

Upon motion duly made, the following resolution is adopted by the Illinois State Board of Education:

**WHEREAS**, the Illinois State Board of Education adopted a written Section 403(b) Plan for the benefit of eligible employees in order to comply with the Internal Revenue Code and Regulations, and the requirements of IRS Notice 2009-3;

**WHEREAS**, to comply with the requirements of IRS Notice 2009-3, the Illinois State Board of Education 403(b) Plan was made effective as of January 1, 2009, and the written Plan governs 403(b) contributions, distributions, and other applicable rules for participants;

**WHEREAS**, the Illinois State Board of Education desires to freeze the Plan to future contributions as of the conclusion of the 2009 Plan Year, so that no new contributions may be made to the Plan on or after January 1, 2010;

**WHEREAS**, the Illinois State Board of Education further desires to freeze the Plan to new participants as of the conclusion of the 2009 Plan Year, so that no employee may become a new participant in the Plan on or after January 1, 2010;

**NOW, THEREFORE, BE IT RESOLVED**, the Illinois State Board of Education freezes the 403(b) Plan to prohibit any new contributions or new participants on or after January 1, 2010;

**AND, BE IT FURTHER RESOLVED**, that Article III and Article VII, as well as any other corresponding sections of the Plan or Adoption Agreement, are hereby amended so that no new salary deferral contributions, rollover contributions, or any other type of contributions shall be permitted on or after January 1, 2010, and no employees shall become eligible to participate in the Plan on or after January

1, 2010. Notwithstanding this freeze in future contributions and participation, the Plan shall continue to be administered for current participants to permit their investment elections and distributions, according to the terms of the written Plan, the Internal Revenue Code, and the IRS Regulations.

## **END OF THE CONSENT AGENDA**

### **FORT BOWMAN ACADEMY CHARTER**

Ms. Koster moved that The State Board of Education accept the State Superintendent's Findings of Fact and Recommendation, that the denial of the Fort Bowman Academy Charter School renewal proposal by Cahokia Unit School District 187 be upheld by the Illinois State Board of Education and authorizes the Chairman of the State Board of Education to execute the determination attached to the State Superintendent's Findings of Fact and Recommendation. Dr. Hall seconded the motion and it passed with a unanimous voice vote.

### **CLOSED SESSION MINUTES**

Ms. Karon moved that pursuant to Section 2.06(d) of the Open Meetings Act, the State Board of Education has reviewed the minutes of its closed sessions from June 2009 through October 2009; and pursuant to Section 2.06(c) of the Open Meetings Act which allows for the destruction of verbatim recordings of closed sessions (no less than 18 months after the completion of the meeting recorded) the State Board of Education certifies that the need for confidentiality still exists for the closed session minutes for the time period reviewed. Further, the State Board of Education approves the destruction of all closed session verbatim recordings prior to June 17, 2008. Dr. Fields seconded the motion and it passed with a unanimous voice vote.

### **NEW BUSINESS**

*None*

### **ANNOUNCEMENTS & REPORTS**

Superintendent Koch commented that 94 of 102 Illinois counties participated in the Illinois Heroes Program. The program asks that school children write letter to soldiers in hospitals in Germany. Governor Quinn will soon be delivering the letters. Dr. Koch also noted that he had been appointed to the board for the Council of Chief State School Officers and has also been nominated to the Steering Committee for the Education Commission of the States.

Dr. Koch asked for clarification from the Board on their preference for the January Board meeting regarding the budget. Do members wish to receive a single recommendation based on the comments heard? Mr. Ruiz suggested creating some kind of competitive grant program to help those districts in need of violence prevention - even if it means shifting funds from organizations traditionally funded. He stated that we need to do what is in the best interest of the children of Illinois with the very scarce tax dollars we have. Ms. Koster suggested a future agenda item to follow-up on next steps concerning school violence.

Mr. Ruiz suggested a three-budget scenario, but that the materials include a single recommendation from the Superintendent. Board Members concurred.

### **IBHE REPORT**

Dr. Ward introduced Dr. Proshanta Nandi from the Illinois Board of Higher Education (IBHE). The IBHE held its meeting on Wednesday, December 8, 2009 at University of Chicago, Assembly Hall in Chicago. Dr. Nandi shared the following highlights of that meeting:

Dr. Nandi noted that December 9th marked the first anniversary of the IBHE's endorsement of the Illinois Public Agenda for College and Career Success.

Chairwoman Carrie Hightman expressed appreciation to the Executive Director and the staff of four sister state agencies of education, Illinois State Board of Education, Illinois Student Assistance Commission, Illinois Community College Board and the Illinois Board

of Higher Education for their efforts to implement many of the recommendations and action steps in the Illinois Public Agenda.

IBHE Executive Director Judy Erwin, Andy Davis from ISAC, Elaine Johnson and Karen Hunter Anderson from ICCB presented a progress report on what has been accomplished on the Illinois Public Agenda for College and Career Success and future action steps.

The state budget situation and the lack of state reimbursement to public colleges and universities for FY2010 operating cost were discussed. The discussion included the following:

The next IBHE meeting will be January 26, 2010 at Chicago State University in Chicago.

#### **CHAIRMAN'S REPORT**

Out of State Travel Announcements:

- Andrea Brown will be attending the Education Commission of the States Meeting in New Orleans, LA from January 6-8, 2010.
- Vinni Hall, Jesse Ruiz and Chris Ward will be traveling to Washington, DC on January 22-23, 2010 to attend a NASBE Study Groups.

#### **MEMBER REPORTS**

Ms. Koster shared information from the Commission on Extreme Poverty, of which she is a member.

Dr. Brown stated that she attended several local meetings in the Marion area and that the state budget crisis continues to be on all agendas. The IASA meeting she recently attended included an informative bargaining program by IEA.

Dr. Hall represented ISBE at Career Technical Day in Springfield. She also attended the Triple I Conference.

Dr. Fields noted that several board members attended the Triple I Conference and that they always enjoy seeing stakeholders and talking with them during the meet and greet sessions.

Dr. Ward had the honor of attending the awarding of the Milken Award to Arthur Walchholz.

Chairman Ruiz stated that he traveled to Houston on behalf the National Association of Latino Elected Officials and attended the National Latino Leadership Initiative which focused on the Elementary and Secondary Education Act Reauthorization. He also met with Linda Darling Hammond and heard her speak at the Bilingual Conference.

Dr. Ward acknowledged and thanked Joyce Karon for all of her work on the budget hearings. Ms. Karon recognized and thanked Linda Mitchell and Scott Taylor and the budget staff for all their help and assistance.

Chairman Ruiz stated that that in closed session the Board just completed Superintendent Koch's annual performance evaluation and that he has successfully exceeded every criterion set forward. The evaluation is not only the Superintendents evaluation but an evaluation of all of his senior staff and colleagues. He commented that staff should be very proud of the fact that they have a part in those achievements.

Mr. Ruiz noted that despite the fact that such an evaluation would merit a bonus and a base pay raise, given the economic climate in our state, Superintendent Koch has asked us not consider any of those actions. Hence, we did not; there was no vote, there will not be any financial reward associated with the hard work and performance that Chris has put forward over the past year. Hopefully, the service Chris provides for our students of Illinois gives

him some reward as he impacts many lives - and that is very important.

Chairman Ruiz noted the Board appreciation of Superintendent Koch's leadership at this time. Mr. Ruiz publicly acknowledged the fact that the team that Chris leads here at ISBE will exceed any expectations the Board will have.

**INFORMATION  
ITEMS**

Vice Chairman Ward asked that the Board members read the Fiscal and Administrative Monthly Reports printed in the Board meeting materials.

**MOTION FOR  
ADJOURNMENT**

Dr. Fields moved that the meeting be adjourned. Ms. Koster seconded the motion and it passed with a unanimous voice vote. The meeting adjourned at 1:30 p.m.

**Respectfully Submitted,**

---

**Dr. Vinni Hall**  
**Board Secretary**

---

**Mr. Jesse Ruiz**  
**Chairman**



**Testimony of IFT President Ed Geppert, Jr.**  
*Illinois State Board of Education – Plenary Session*  
*Fort Bowman Academy Charter Hearing*  
December 17, 2009

Good morning. My name is Ed Geppert, Jr., president of the Illinois Federation of Teachers. I am here today to speak in support of the non-renewal of the Ft. Bowman Academy charter in Cahokia, Illinois. The IFT is always willing to come to the table with a strong voice to advocate for research-based, effective education for all students in Illinois. Today we believe it is clear that the Fort Bowman Academy Charter School fails to live up to the principles of being in the best interests of the students of the community of Cahokia for the following reasons:

- 1 For the last two years, overall state assessment data show that academic progress at the charter school is declining, even as overall district assessment scores for the traditional public schools of Cahokia have shown progress
- 2 The union remains concerned that all staff at the Fort Bowman Charter School has not been fully certificated. Since 2007 the charter school has employed a certificated administrator on staff but did <sup>not</sup> assign that professional to an administrative post. The charter employed four non-certified administrators.
- 3 It is also clear that the community has spoken. Community support for the Fort Bowman Academy has decreased significantly in recent years.
  - There is demand in the community to enroll students in Cahokia's traditional public school of choice over the Fort Bowman Academy Charter School. The Cahokia School of Choice, a K-12 school operated by the district, opened two years ago and is showing strong academic results. In response

to community demand, the district this year opened a second school of choice. During this same time, Fort Bowman has experienced a significant drop in community interest. A lottery has not been required since the 2006-2007 school year, and in the last few years, the school's student retention data show an increasing loss of students each year due to transfers out of the school.

- Furthermore, in the Spring 2009 school board election, when provided with the opportunity, the community did not elect the three strongly pro-charter school candidates. In fact, two of three candidates received fewer votes than all but one other candidate.
- Our local union has been approached numerous times by different community members, who express concern that some of the charter school's governing body members are not from Cahokia, and that some students enrolled at Fort Bowman are not from Cahokia.
- Finally, the student population served by the charter school continues to not reflect the community with following comparison to the district schools:

% Low Income	10.6/82.7
% Black	46.0/86.8

Given all of these reasons, as well as the strong case presented here today by Cahokia School District representatives and by ISBE staff, I urge you on behalf of the IFT and our affiliate the Cahokia Federation of Teachers Local 1272 representing all professional and support staff employees, to confirm the decision of the Cahokia School Board and administration to not renew the Fort Bowman Academy charter.

Thank you.

# **Fort Bowman Academy Charter School**



“Educating for the  
Future”

## **Mission Statement**

- The mission of Fort Bowman Academy Charter School is to prepare all of its students for college or career placement regardless of ethnic, cultural, language, or socioeconomic status by providing an education which will allow them to develop their talents, fulfill their potential, and excel in their select areas of academic and/or economic life.

## We Believe:

- Education is a product of cooperation among parent, teacher, and student.
- The school cannot accomplish its mission alone; a strong supportive partnership with parents is essential.
- Setting high expectations appropriate to each student is the best way to accomplish our mission.

## We Believe:

- Communication among students, staff, administration, parents and community should be open and consistent.
- A student's uniqueness is the basis for his or her self worth.
- Students have different learning styles and rates and should be taught accordingly.

## We Believe:

- All students can learn to their own unique potential.
- Students are responsible for their own actions and behaviors.
- All people deserve respect.
- It is not only the students' aptitude, but also their attitude that will determine their altitude.

## School Day

- A student's day starts at 8:00 a.m. and ends at 3:00 p.m.
- Grades K-5 are in self-contained classrooms
- Grades 6-12 change classrooms with each subject
- Grades K-12 receive Physical Education classes every day
- Grades K-8 receive an average of 23% more class time devoted to core curriculum subjects than state average <sup>1</sup>

<sup>1</sup> 2008 Illinois School Report Card



## Behavior

- Each class is required to have a behavior plan to address inappropriate behavior
- Diverse student body leads to acceptance of differences among students



## Staff

- Every teacher has a Bachelors Degree <sup>1</sup>
- 5 teachers with a Masters Degree <sup>2</sup>
- 3 teachers with Special Education Endorsement
- Teachers are required to participate in continuing education classes
- Experienced teachers work closely on a daily basis with new instructors as mentors

<sup>1, 2</sup> 2008 Illinois School Report Card

## Student Achievement

- In 2007-2008, 95% of our students graduated, considerably higher than the state average of 86.5% <sup>1</sup>
- After graduation, nearly all of our students continue on to college
- Most students continue to keep in touch with the faculty and staff at Fort Bowman

<sup>1</sup> 2008 Illinois School Report Card

## Selected Accomplishments of Fort Bowman Academy Graduates

Tiara Canada- Certified Substitute Teacher for Cahokia Unit School District #187

Marcus McNeal- University of Illinois-Springfield

Justin Gamblin- Student McKendree College Sociology Major

Kara Crum- Student at Southwestern Illinois College Psychology Major

Kia Ward- Student at Southwestern Illinois College Psychology Major

Lucas Peebles- Student Criminal Justice Program

Thomas Hunter- Student at Danville College also on their basketball team

Scott Maguirk- Student at SIUE

Cecilia Mann- Student at SIUE Education

Jamel Washington- Student Blackburn College and also on their basketball team

Jamul Washington- Student Culinary Program at Southwestern Illinois College

Chelsea Radford- Student Gateway Bible College

Phillip Weeden- Student studying Construction Management at Southwestern Illinois College

Cory Jones- Student at Paul Mitchell Cosmetology School

Lauren Weatherford- Student Southwestern Illinois College Criminal Justice Program

Kenneth Gray- Student Southwestern Illinois College

## Accomplishments - continued

Cecilia Mann- Student at SIUE Education

Alyssa Rhoten – Studying History locally

Nicky Louvier- Stay at home mother

Derek Crockett – Manager/Mechanic at PG Racing and works for his families business

Samantha Brown – Village of Cahokia employee and a new mother

Devin Cornwell- Student Southwestern Illinois College

Bobby Rhyne- Student Southwestern Illinois College

Jeff Lansing- Student Southwestern Illinois College

Preston Jeter- Student South western Illinois College

Gene Young- U.S Army, Served in Iraq for 18 months

Steven Greer- Pharmacy Technician

## Accomplishments - continued

Victoria Null- Certified Cosmetologist

Jerrel Thomas-Working for UPS

Mark Fierstein – US Navy

Dawn Czapl- Mother of three, and Customer Service and Sales Associate for Wal-Mart

Robbie Miller- Firefighter for Camp Jackson fire department

Andy Jackson- Newspaper pressman

Lindsay Kenner- Childcare provider at Lighthouse Daycare

Chase Kenner – Student Southwestern Illinois College studying Performance Arts



## Funding

- We maintain educational needs for our students using state funds allotted per child
- Our years always end in the black <sup>1</sup>
- School fees for each student help to defray the cost of items not covered by the state funding
- Financial assistance offered to parents experiencing difficulties

<sup>1</sup> Annual Audits by CPA firm of Fick, Eggemeyer and Williamson

## Communication

- Open communication between teachers and students
- Open communication between teachers and parents
- Open communication between office staff and families
- Monthly newsletters and calendars are shared
- Grades are sent home at 3 weeks and 6 weeks, as well as quarterly
- Open Door policy with administrators

## Community Impact

- Uniform policy promotes unity and equality
- A smaller student-to-teacher ratio allows students to engage more deeply with their subject matter and each other
- Toy and Food Drives for Dorris Davis Helping Hands Shelter
- Many students seek careers that will allow them to give back to their community, contributing to the economic growth and strengthen their ties with the surrounding area

## Impact of Parental Involvement

- Parent volunteers assist faculty and staff and provide direct input into the educational process of their children
- Parental involvement in transporting students to school increases the number of students in attendance and allows for immediate communication between parents and teachers
- Strong parental involvement discourages truancy and delinquency
- Parental involvement shows students the value in education, leading to students' desires to increase individual performance in school and to become lifelong learners

## Fort Bowman is Achieving Goals and Objectives <sup>1</sup>

- Integrated reading begins in Kindergarten
- Extensive analysis of student performance at the classroom, building, and school levels
- Multiple assessment tools used, including semiannual administration of the Iowa Test
- Both in-class and after-school remediation are addressed
- Compliant with the Illinois State Board of Education Teaching Standards
- All new teachers participate in a mentoring program

<sup>1</sup> 2008-2009 Accountability Plan

## Fort Bowman Charter Academy is

- An expanding family of educators and scholars
- Eager to help students achieve their goals
- A home for both traditional and non-traditional students
- A trusting atmosphere where children are comfortable to express themselves fully
- Committed to success!



**ILLINOIS STATE BOARD OF EDUCATION  
WORK STUDY: VIOLENCE IN SCHOOLS  
DECEMBER 16, 2009  
Springfield, Illinois**

**Board Members Present**

Jesse Ruiz, Chairman  
Chris Ward, Vice Chairman  
Vinni Hall, Board Secretary  
Andrea Brown, Board Member  
David Fields, Board Member  
Joyce Karon, Board Member  
Lanita Koster, Board Member

**Staff Present**

Superintendent Christopher A. Koch  
Susie Morrison  
Darren Reisberg  
Matt Vanover  
Linda Tomlinson  
Connie Wise  
Beth Hanselman  
Linda Mitchell  
Don Evans

**Others Present**

Mr. Michael Shields, Safety and Security Officer, Chicago Public Schools  
Christian Plummer, Project Manager, Chicago Public Schools  
Mr. Chika Okafur, Project Manager, Chicago Public Schools  
Adam Alonso, Safety Net Works Coordinator, Cicero  
Aana Macario, Safety Net Works Youth Council Representative, Cicero  
Rogers Jones, Safety Net Works Coordinator, Roseland  
Aisha Latiker, Safety Net Works Youth Council Representative, Roseland  
Shannon Sullivan Executive Director, Illinois Safe Schools Alliance  
Marc Kiehna, Monroe-Randolph Regional Superintendent  
Cheryl Lodge, Challenge Day Coordinator and Physical Education & Health Teacher, Trico C.U.S.D. #176

The Violence in Schools Work Study was called to order at 9:30 a.m. Superintendent Koch began with a review of partnerships which continue to build and enhance safe and drug-free school coalitions with the agency. There are a number of examples of the initiatives that staff across the agency are involved with either through grants, task forces, committees, some in collaborative with other agencies:

- Strategic Prevention Framework State Incentive Grant (SPF SIG)
- Illinois Youth Survey (IYS)
- Drug Alcohol Substance Abuse (DASA) Advisory Committee
- Illinois Task Force for The Condition of African American Male
- Illinois Safe School Alliance (ISSA)
- Restorative Justice in Illinois Schools
- Maintaining District bullying policies
- Access to public health issues
- School Incident Reporting System (SIS)
- School Safety Web Link
- Illinois Emergency Operations Plan (IEOP)
- State Health Improvement Plan (SHIP) Team
- Illinois Taskforce's Pandemic Flu Workgroup
- Campus Security Taskforce
- Student Behavioral Threat Assessment – An education leadership opportunity sponsored by the Illinois Terrorism Task Force and Illinois State Board of Education
- Ensuring Success in Schools Task Force
- Committee of Cooperative Services
- Persistently Dangerous Schools
- Homeless Education
- Title IV Safe and Drug Free Schools Grants
- Prevention First Grant
- SEA Title IV activities for Safe and Drug Free schools.

**Illinois Dropout Prevention Summit Video** – Superintendent Koch shared a video highlighting students who participated in the State Farm/America's Promise Alliance Illinois Dropout Prevention Summit.

The Board also heard from the following experts and had the opportunity to brainstorm what can be done at the state level to help local districts protect their students from peer bullying and violent acts in and

around the school. The Board will bring this topic back to the Education Policy Planning Committee to discuss next steps following this month's discussion.

**Chicago Public Schools (CPS) Safety & Security Initiative** (*Michael Shields, Christian Plummer and Chika Okafur*) Mr. Shields indicated that after 28 years with the Chicago Police Department, he joined Chicago Public Schools in May 2009 as Director of Safety and Security. Chicago Public Schools has developed a strategy for safety and security and the strategy is outlined by three key areas. (See materials in December Work Study packet for more information.)

- 1) Identify Students at Risk of Becoming Victims of Violence.
  - 80+% of shootings occur during times outside of CPS' control
  - All shootings occurred outside of school
  - BUT, there is a very predictable pattern of victims; most had a common set of risk factors
  - These risk factors are identifiable using basic CPS data
  - It is possible to identify students that have a high probability of falling victim
  
- 2) Creating a School Culture of Calm; and
  - About 70% of schools' variation in safety performance is outside principal's control - based on environmental risk factors
  - 30% is within a principal's control
  - A different safety philosophy exists for schools that are performing well
  - Outperforming schools tend to favor mental health and prevention whereas underperforming schools favor policing and punishment/discipline
  
- 3) Creating a Safe Passage to and from School.
  - School by school review using gang boundaries and student survey information to plan community based safe passage strategies
  - Bus service in areas where students feel "unsafe"
  - Boosting parental, community and police involvement in focus areas

CPS staff discussed how this strategy evolved and shared data compiled as a result of an analysis of incidents. CPS security/safety staff are working with principals on a school-by-school basis to ensure principals are aware of gang boundaries and are trained in prevention strategies.

Chairman Ruiz thanked the CPS for sharing their information and the Board looks forward to supporting their efforts in any way possible.

**State of Illinois Safety Net Works** (*Adam Alonso, Coordinator, Cicero, Aana Macario, Youth Council Representative, Cicero, Rogers Jones, Coordinator, Roseland, Aisha Latiker, Youth Council Representative, Roseland*)

Mr. Adam Alonso indicated that The Safety Net Works is an initiative comprised of state agencies and community-based organizations, formed to help address violence and killing in communities in Illinois. It combines public and community resources to help young people avoid acts of crime and violence.

Safety Net Works coalitions are located in five cities (Chicago, Cicero, Decatur, East St. Louis and Rockford), and serve youth and young adults, between the ages of 10 to 24 years old.

The Safety Net Works coordinates existing state service providers in Safety Net Works communities, while leveraging resources to youth and community coalitions in these targeted areas. Coalition resources are used to improve public education, promote economic independence, provide academic enrichment and recreational opportunities, and address inequalities in the juvenile and criminal justice systems.

The Safety Net Works is based on seven core values:

- Coalition Building
- Community Specific Program Design
- Youth Leadership Development
- Establishing Networks
- School-Based Violence Prevention
- Public Education
- Social Enterprise

Mr. Alonso and the other panelists shared how The Safety Net Works assists students in their communities. The Safety Net Works brings individuals, groups, and agencies together through the common objective of violence prevention.

Further information about this program can be found at <http://www.dhs.state.il.us/page.aspx?item=40350>

**Illinois Safe Schools Alliance** Youth Risk Behavior Surveillance (YRBS) Survey (*Shannon Sullivan*)  
The Illinois Safe Schools Alliance ([www.illinoissafeschools.org/](http://www.illinoissafeschools.org/)) is a non-profit agency based out of Chicago. Ms. Sullivan shared that her participation in the work study will focus on identification and prevention of bullying in schools. (See materials in December Work Study packet for more details regarding the following information.)

Types of bullying/peer harassment:

- Physical– pushing, hitting, biting, scratching, physically restraining, damaging property.
- Verbal– teasing, threatening, intimidating, name-calling.
- Social– excluding from social groups, ostracizing, spreading rumors, isolating, getting other to dislike person.
- Sexual– any of the above that includes a sexual undertone or connotation.(Craig, et al. 2001)
- Electronic—use of internet for comments or posting pictures

School personnel don't intervene upon hearing biased remarks at school

- 48% rarely or never intervene on homophobic remarks
- 30% rarely or never intervene on racist remarks
- 29% rarely or never intervene on sexist remarks

Students hear biased language from school personnel:

- 19% have heard sexist remarks; 12% racist remarks; 11% homophobic remarks; 7% negative religious remarks

The three most common reasons high school students in Illinois are bullied in school are:

- 1) Physical appearance (looks or body size) 40% report being frequently bullied
- 2) Perceived sexual orientation 35% report being frequently bullied
- 3) Gender expression 34% report being frequently bullied

According to the U.S. Dept. of Health & Human Services, bullying prevention programs that work include:

- Establishing & enforcing clear school policies that define the problem, define the consequences, establish avenues to collect data, and outline adult intervention
- Posting and discussing the school policies with all students, parents and guardians
- Providing professional development to all school personnel on the problem of bullying, its effects and how to intervene
- Devoting class time to talking with students about bullying and how to prevent it

**Challenge Day Program** (*Marc Kiehna, Monroe-Randolph Regional Superintendent and Cheryl Lodge, Physical Education & Health Teacher, Trico C.U.S.D. #176*)

Superintendent Kiehna introduced Ms. Lodge, who encouraged Trico administration to bring the Challenge Day Program to the high school. Ms. Lodge explained that the Challenge Day program a

501(c)(3) non-profit organization based out of California that provides a powerful service to students in grades 7-12. The organization sends two facilitators to the school for a 6½ hour one-day session. Trico sent 100 students each day over a 3-day period, allowing all 300 high school students to go through the program. District administrators, faculty and non-certified staff also participated and gained from participation in the program.

Ms. Lodge shared the Challenge Day video which is available on the organization's website at: <http://www.challengeday.org/videos.php>. The video, *Teen Files: Surviving High School*, is a 15 minute excerpt highlighting a typical Challenge Day Program. This Emmy Award winning documentary was produced by Arnold Shapiro Productions, hosted by Leeza Gibbons, and features Challenge Day's founders Rich and Yvonne St. John-Dutra. Ms. Lodge indicated that the participants featured in the video could very well have been the students and participants at Trico. The program provides preliminary activities to prepare for the seminar as well as follow-up activities to assist schools in sustaining the inspiration of the program.

Ms. Lodge indicated that the cost was approximately \$3400 per day for a minimum of three days, so the district was looking at a \$10,000 expense; however, outside donations were received for the total cost of the program. Mr. Ruiz commented that \$34 per student per day is a small price to pay for the outcomes revealed in the video.

For more information on the Challenge Day program, go to: [www.challengeday.org/how-challenge-day-works.php](http://www.challengeday.org/how-challenge-day-works.php)

Chairman Ruiz thanked the participants for sharing the enlightening information and thanked Dr. Vinni Hall for working with staff to bring this long-awaited discussion to fruition.

The Work Study session adjourned at 12:45 p.m.

**Respectfully Submitted,**

---

**Dr. Vinni Hall**  
**Board Secretary**

---

**Mr. Jesse Ruiz**  
**Chairman**

**Approved January 14, 2010**

**ILLINOIS STATE BOARD OF EDUCATION MEETING**  
**January 13-14, 2010**

**TO:** Illinois State Board of Education

**FROM:** Christopher A. Koch, Ed.D., State Superintendent of Education   
Linda Riley Mitchell, Chief Financial Officer   
Donald W. Evans, Director of Human Resources 

**Agenda Topic:** Information Item: **SBE Fiscal & Administrative Monthly Reports**

*Materials:* Appropriations and Spending by Program  
Financial Status Report (contract & grant detail)  
Comparative Statement of Expenditures  
Monthly Headcount Graph, Staff Detail, Personnel Transactions

**Purpose of Agenda Item**

To provide the Board standard reports with key information on fiscal and administrative activities of the state Agency.

**Relationship to/Implications for the State Board's Strategic Plan**

Not applicable – informational item only.

**Expected Outcome(s) of Agenda Item**

Not applicable – informational item only.

**Background Information**

In June 2002, the State Board adopted bylaws outlining a new committee structure under which fiscal, audit and operations issues will be handled by the Finance and Audit Committee. The Superintendent requested that the Agency organize and standardize the financial and headcount data provided to the Board for their future policy work and decision making.

Currently, the following reports are provided:

1. Budget/Annual Report (annually in January)
2. Condition of Public Education (December)
3. Comptroller SEA Report (annually in February)
4. Appropriation and Expenditure (monthly)
5. Financial Status Report – Contract/Grant Detail (monthly)
6. Comparative Statement of Expenditures (monthly)
7. Headcount Reports (monthly)  
Personnel Transactions, Staff Detail by Division, & Monthly Headcount Graph

### **Analysis and Implications for Policy, Budget, Legislative Action and Communications**

The monthly or Quarterly Fiscal and Headcount Reports were first provided to the Board in August 2002. These reports provide information regarding staffing and funding as well as details of contracts over \$50,000 and grants the Agency is processing.

All contracts and grants totaling over \$1 million are reviewed at the Board level. There are no contracts or grants included in this month's review.

### **Superintendent's Recommendation**

None needed.

### **Next Steps**

Continue to provide these reports pursuant to the schedule above.

**Illinois State Board of Education**  
**2010 Appropriation & Spending by Program 07/01/2009 thru 12/31/2009**

(Dollars in Thousands)

Initiatives	Appropriation			YTD Expenditures		
	Total	Grants	Admin	Total	Grants	Admin
<b>STATE</b>						
<b>Distributive Grants</b>	<b><u>\$6,565,684.6</u></b>	<b><u>\$6,565,684.6</u></b>	<b><u>\$0.0</u></b>	<b><u>\$2,990,491.6</u></b>	<b><u>\$2,990,491.6</u></b>	<b><u>\$0.0</u></b>
General State Aid	\$3,809,529.4	\$3,809,529.4	\$0.0	\$1,895,752.8	\$1,895,752.8	\$0.0
ARRA - General State Aid-Gen Stabilization	\$601,717.2	\$601,717.2	\$0.0	\$0.0	\$0.0	\$0.0
ARRA - General State Aid-Educ Stabilization	\$189,058.5	\$189,058.5	\$0.0	\$189,058.5	\$189,058.5	\$0.0
General State Aid/Hold Harmless	\$15,670.6	\$15,670.6	\$0.0	\$15,670.6	\$15,670.6	\$0.0
Charter Schools - Transition Impact Aid	\$0.0	\$0.0	\$0.0	\$0.0	\$0.0	\$0.0
District Consolidation Cost	\$3,700.0	\$3,700.0	\$0.0	\$3,022.2	\$3,022.2	\$0.0
Fast Growth Grants	\$0.0	\$0.0	\$0.0	\$0.0	\$0.0	\$0.0
Gifted Education	\$0.0	\$0.0	\$0.0	\$0.0	\$0.0	\$0.0
Homeless Education	\$0.0	\$0.0	\$0.0	\$0.0	\$0.0	\$0.0
School Breakfast Incentive Program	\$361.8	\$361.8	\$0.0	\$106.4	\$106.4	\$0.0
School Safety & Education Block Grant (ADA)	\$18,710.3	\$18,710.3	\$0.0	\$9,355.2	\$9,355.2	\$0.0
Textbook Loan Program	\$0.0	\$0.0	\$0.0	\$0.0	\$0.0	\$0.0
Transition Assistance	\$0.0	\$0.0	\$0.0	\$0.0	\$0.0	\$0.0
<b>Mandated Categoricals</b>	<b><u>\$1,926,936.8</u></b>	<b><u>\$1,926,936.8</u></b>	<b><u>\$0.0</u></b>	<b><u>\$877,525.8</u></b>	<b><u>\$877,525.8</u></b>	<b><u>\$0.0</u></b>
Illinois Free Lunch/Breakfast	\$26,300.0	\$26,300.0	\$0.0	\$18,113.4	\$18,113.4	\$0.0
Orphanage Tuition 18-3 (Reg Ed)	\$13,000.0	\$13,000.0	\$0.0	\$6,076.3	\$6,076.3	\$0.0
Sp-Ed - Extraordinary Services	\$334,236.8	\$334,236.8	\$0.0	\$118,319.8	\$118,319.8	\$0.0
Sp-Ed - Orphanage Tuition 14-7.03	\$43,031.6	\$43,031.6	\$0.0	\$43,031.6	\$43,031.6	\$0.0
Sp-Ed - Orphanage Tuition 14-7.04	\$77,168.4	\$77,168.4	\$0.0	\$34,063.9	\$34,063.9	\$0.0
Sp-Ed - Personnel Reimbursement	\$459,600.0	\$459,600.0	\$0.0	\$198,942.4	\$198,942.4	\$0.0
Sp-Ed - Private Tuition	\$181,100.0	\$181,100.0	\$0.0	\$134,205.6	\$134,205.6	\$0.0
Sp-Ed - Summer School	\$11,700.0	\$11,700.0	\$0.0	\$11,602.5	\$11,602.5	\$0.0
Sp-Ed - Transportation	\$429,700.0	\$429,700.0	\$0.0	\$140,272.7	\$140,272.7	\$0.0
Transportation - Regular/Vocational	\$351,100.0	\$351,100.0	\$0.0	\$172,897.5	\$172,897.5	\$0.0
<b>Standards - Assessment &amp; Accountability</b>	<b><u>\$34,003.2</u></b>	<b><u>\$1,646.4</u></b>	<b><u>\$32,356.8</u></b>	<b><u>\$19,846.1</u></b>	<b><u>\$0.0</u></b>	<b><u>\$19,846.1</u></b>
American Diploma Project	\$500.0	\$0.0	\$500.0	\$0.0	\$0.0	\$0.0
Assessments	\$28,606.8	\$0.0	\$28,606.8	\$19,519.3	\$0.0	\$19,519.3
Growth Model	\$3,000.0	\$0.0	\$3,000.0	\$313.3	\$0.0	\$313.3
Longitudinal Data System	\$250.0	\$0.0	\$250.0	\$13.6	\$0.0	\$13.6
System of Support	\$1,646.4	\$1,646.4	\$0.0	\$0.0	\$0.0	\$0.0

Initiatives	Appropriation			YTD Expenditures		
	Total	Grants	Admin	Total	Grants	Admin
<b>Ensuring Quality Ed Personnel</b>	<b><u>\$20,599.5</u></b>	<b><u>\$18,051.8</u></b>	<b><u>\$2,547.7</u></b>	<b><u>\$1,683.3</u></b>	<b><u>\$1,132.2</u></b>	<b><u>\$551.1</u></b>
Grow Your Own Teachers	\$3,150.0	\$2,808.0	\$342.0	\$1,056.9	\$1,009.4	\$47.5
National Board Certification	\$5,742.5	\$5,742.5	\$0.0	\$0.0	\$0.0	\$0.0
Principal Mentoring Program	\$2,077.0	\$0.0	\$2,077.0	\$400.0	\$0.0	\$400.0
Teach for America	\$225.0	\$225.0	\$0.0	\$122.8	\$122.8	\$0.0
Teacher and Admin. Mentoring Program	\$9,405.0	\$9,276.4	\$128.6	\$103.6	\$0.0	\$103.6
<b>Reading Improvement Block Grant</b>	<b><u>\$68,525.7</u></b>	<b><u>\$68,525.7</u></b>	<b><u>\$0.0</u></b>	<b><u>\$24,527.5</u></b>	<b><u>\$24,527.5</u></b>	<b><u>\$0.0</u></b>
<b>Early Childhood</b>	<b><u>\$342,235.3</u></b>	<b><u>\$338,068.9</u></b>	<b><u>\$4,166.4</u></b>	<b><u>\$144,787.2</u></b>	<b><u>\$143,368.8</u></b>	<b><u>\$1,418.4</u></b>
<b>Academic Difficulty</b>	<b><u>\$123,554.4</u></b>	<b><u>\$123,554.4</u></b>	<b><u>\$0.0</u></b>	<b><u>\$40,115.9</u></b>	<b><u>\$40,115.9</u></b>	<b><u>\$0.0</u></b>
Alternative Learning/Regional Safe Schools	\$16,682.0	\$16,682.0	\$0.0	\$7,642.4	\$7,642.4	\$0.0
Bilingual Education	\$68,086.8	\$68,086.8	\$0.0	\$7,039.7	\$7,039.7	\$0.0
Extended Learning Op (Summer Bridges)	\$20,715.3	\$20,715.3	\$0.0	\$13,334.3	\$13,334.3	\$0.0
Truant Alternative Optional Education	\$18,070.3	\$18,070.3	\$0.0	\$12,099.5	\$12,099.5	\$0.0
<b>Learning Technologies</b>	<b><u>\$4,169.7</u></b>	<b><u>\$2,719.7</u></b>	<b><u>\$1,450.0</u></b>	<b><u>\$2,162.7</u></b>	<b><u>\$1,387.8</u></b>	<b><u>\$774.8</u></b>
Technology for Success	\$4,169.7	\$2,719.7	\$1,450.0	\$2,162.7	\$1,387.8	\$774.8
<b>School Infrastructure</b>	<b><u>\$0.0</u></b>	<b><u>\$0.0</u></b>	<b><u>\$0.0</u></b>	<b><u>\$0.0</u></b>	<b><u>\$0.0</u></b>	<b><u>\$0.0</u></b>
Temporary Relocation Expense Fund Deposit	\$0.0	\$0.0	\$0.0	\$0.0	\$0.0	\$0.0
<b>Career Preparation</b>	<b><u>\$41,605.2</u></b>	<b><u>\$41,605.2</u></b>	<b><u>\$0.0</u></b>	<b><u>\$22,791.6</u></b>	<b><u>\$22,791.6</u></b>	<b><u>\$0.0</u></b>
Agricultural Education	\$3,043.1	\$3,043.1	\$0.0	\$1,924.6	\$1,924.6	\$0.0
Career and Technical Education	\$38,562.1	\$38,562.1	\$0.0	\$20,866.9	\$20,866.9	\$0.0
Illinois Governmental Internship Program	\$0.0	\$0.0	\$0.0	\$0.0	\$0.0	\$0.0
Jobs for Illinois Graduates	\$0.0	\$0.0	\$0.0	\$0.0	\$0.0	\$0.0
<b>Regional Services</b>	<b><u>\$14,222.1</u></b>	<b><u>\$9,515.2</u></b>	<b><u>\$38.1</u></b>	<b><u>\$7,636.2</u></b>	<b><u>\$3,552.0</u></b>	<b><u>\$4,084.3</u></b>
Regional Superintendent Initiatives	\$0.0	\$0.0	\$0.0	\$0.0	\$0.0	\$0.0
ROE - Bus Driver Training	\$108.1	\$70.0	\$38.1	\$82.2	\$70.0	\$12.2
ROE - Salaries	\$9,100.0	\$4,431.2	\$0.0	\$4,431.2	\$359.1	\$4,072.1
ROE - School Services	\$4,912.0	\$4,912.0	\$0.0	\$3,020.8	\$3,020.8	\$0.0
ROE - Supervisory Expenses	\$102.0	\$102.0	\$0.0	\$102.0	\$102.0	\$0.0
<b>Strategic Plan</b>	<b><u>\$250.0</u></b>	<b><u>\$0.0</u></b>	<b><u>\$250.0</u></b>	<b><u>\$61.0</u></b>	<b><u>\$0.0</u></b>	<b><u>\$61.0</u></b>
Strategic Plan	\$250.0	\$0.0	\$250.0	\$61.0	\$0.0	\$61.0
<b>Administration</b>	<b><u>\$26,649.5</u></b>	<b><u>\$0.0</u></b>	<b><u>\$26,649.5</u></b>	<b><u>\$10,757.9</u></b>	<b><u>\$0.0</u></b>	<b><u>\$10,757.9</u></b>

Initiatives	Appropriation			YTD Expenditures		
	Total	Grants	Admin	Total	Grants	Admin
<b>Targeted Initiatives</b>	<b><u>\$23,551.6</u></b>	<b><u>\$20,883.8</u></b>	<b><u>\$2,667.8</u></b>	<b><u>\$10,667.9</u></b>	<b><u>\$10,289.7</u></b>	<b><u>\$378.2</u></b>
Advanced Placement Classes	\$823.5	\$811.9	\$11.6	\$463.5	\$463.5	\$0.0
After School Matters	\$5,000.0	\$5,000.0	\$0.0	\$2,135.4	\$2,135.4	\$0.0
Arts and Foreign Language	\$2,000.0	\$2,000.0	\$0.0	\$828.0	\$828.0	\$0.0
Autism Project	\$100.0	\$100.0	\$0.0	\$0.0	\$0.0	\$0.0
Blind & Dyslexic	\$816.6	\$816.6	\$0.0	\$600.0	\$600.0	\$0.0
Childrens Mental Health Partnership	\$2,700.0	\$2,333.8	\$366.2	\$1,374.8	\$1,330.2	\$44.6
Class Size Reduction Pilot Project	\$0.0	\$0.0	\$0.0	\$0.0	\$0.0	\$0.0
Classroom Cubed	\$1,000.0	\$1,000.0	\$0.0	\$0.0	\$0.0	\$0.0
Community Residential Services Authority	\$575.0	\$0.0	\$575.0	\$252.1	\$0.0	\$252.1
Educator Misconduct Investigations	\$375.0	\$0.0	\$375.0	\$46.0	\$0.0	\$46.0
Hard to Staff Schools Incentives	\$0.0	\$0.0	\$0.0	\$0.0	\$0.0	\$0.0
Illinois Economic Education	\$0.0	\$0.0	\$0.0	\$0.0	\$0.0	\$0.0
Materials Center for the Visually Impaired	\$1,421.1	\$1,421.1	\$0.0	\$810.0	\$810.0	\$0.0
Minority Transition Program	\$0.0	\$0.0	\$0.0	\$0.0	\$0.0	\$0.0
Philip J. Rock Center & School	\$3,577.8	\$3,577.8	\$0.0	\$1,900.0	\$1,900.0	\$0.0
Re-Enrollment Student Program	\$3,600.0	\$3,600.0	\$0.0	\$2,000.0	\$2,000.0	\$0.0
Response to Intervention	\$1,340.0	\$0.0	\$1,340.0	\$35.5	\$0.0	\$35.5
Tax Equivalent Grants	\$222.6	\$222.6	\$0.0	\$222.6	\$222.6	\$0.0
Transportation Reimbursement to Parents	\$0.0	\$0.0	\$0.0	\$0.0	\$0.0	\$0.0
Rural Technology Initiative	\$0.0	\$0.0	\$0.0	\$0.0	\$0.0	\$0.0
<b>Reappropriations</b>	<b><u>\$39,665.9</u></b>	<b><u>\$39,665.9</u></b>	<b><u>\$0.0</u></b>	<b><u>\$34,227.8</u></b>	<b><u>\$34,227.8</u></b>	<b><u>\$0.0</u></b>
Textbook Loan Reappropriations	\$39,665.9	\$39,665.9	\$0.0	\$34,227.8	\$34,227.8	\$0.0
<b>NON STATE</b>						
<b>School Infrastructure Fund</b>	<b><u>\$120.1</u></b>	<b><u>\$0.0</u></b>	<b><u>\$120.1</u></b>	<b><u>\$53.8</u></b>	<b><u>\$0.0</u></b>	<b><u>\$53.8</u></b>
School Infrastructure (Debt Admin)	\$120.1	\$0.0	\$120.1	\$53.8	\$0.0	\$53.8
<b>Driver Education</b>	<b><u>\$18,018.6</u></b>	<b><u>\$17,929.6</u></b>	<b><u>\$89.0</u></b>	<b><u>\$8,998.3</u></b>	<b><u>\$8,960.8</u></b>	<b><u>\$37.5</u></b>
<b>Other Funds</b>	<b><u>\$161,128.9</u></b>	<b><u>\$143,020.0</u></b>	<b><u>\$18,108.9</u></b>	<b><u>\$2,371.5</u></b>	<b><u>\$520.2</u></b>	<b><u>\$1,851.2</u></b>
Charter Schools Revolving Loan Fund	\$20.0	\$20.0	\$0.0	\$0.0	\$0.0	\$0.0
Capital Development Fund School Construction	\$25,000.0	\$25,000.0	\$0.0	\$0.0	\$0.0	\$0.0
Emergency Financial Assistance Fund	\$1,000.0	\$1,000.0	\$0.0	\$21.9	\$21.9	\$0.0
Indirect Costs	\$7,015.2	\$0.0	\$7,015.2	\$1,318.2	\$0.0	\$1,318.2
ISBE - Special Purpose Trust Fund	\$8,484.8	\$0.0	\$8,484.8	\$27.9	\$0.0	\$27.9
ISBE Teacher Certificate Institute Fund	\$1,008.9	\$0.0	\$1,008.9	\$139.8	\$0.0	\$139.8
School Construction	\$0.0	\$0.0	\$0.0	\$0.0	\$0.0	\$0.0
School Infrastructure Fund (maintenance projects)	\$100,000.0	\$100,000.0	\$0.0	\$0.0	\$0.0	\$0.0
School Technology Revolving Loan	\$5,000.0	\$5,000.0	\$0.0	\$0.0	\$0.0	\$0.0
Teacher Certification Fee Revolving Fund	\$1,600.0	\$0.0	\$1,600.0	\$365.3	\$0.0	\$365.3

Initiatives	Appropriation			YTD Expenditures		
	Total	Grants	Admin	Total	Grants	Admin
Technology Immersion - Build IL Bond Fund	\$10,000.0	\$10,000.0	\$0.0	\$0.0	\$0.0	\$0.0
Temporary Relocation Revolving Fund	\$2,000.0	\$2,000.0	\$0.0	\$498.3	\$498.3	\$0.0

<b>FEDERAL</b>
----------------

<b>Federal Funds</b>	<b><u>\$3,637,449.9</u></b>	<b><u>\$3,560,388.7</u></b>	<b><u>\$77,061.3</u></b>	<b><u>\$798,803.9</u></b>	<b><u>\$780,096.9</u></b>	<b><u>\$18,707.0</u></b>
Advanced Placement Fee Payment	\$2,099.1	\$2,000.0	\$99.1	\$1,192.8	\$1,192.8	\$0.0
ARRA - Child Nutrition Sch Lunch Equipment	\$3,657.3	\$3,657.3	\$0.0	\$3,537.0	\$3,537.0	\$0.0
ARRA - IDEA - Part B	\$506,479.8	\$506,479.8	\$0.0	\$74,306.8	\$74,306.8	\$0.0
ARRA - IDEA - Pre-School	\$18,311.5	\$18,311.5	\$0.0	\$3,022.4	\$3,022.4	\$0.0
ARRA - McKinney Homeless	\$2,581.6	\$2,581.6	\$0.0	\$1,621.8	\$1,621.8	\$0.0
ARRA - Title I	\$420,263.6	\$420,263.6	\$0.0	\$10,294.3	\$10,294.3	\$0.0
ARRA - Title I School Improvement (1003G)	\$124,201.0	\$124,201.0	\$0.0	\$0.0	\$0.0	\$0.0
ARRA - Title II Technology	\$26,523.2	\$26,523.2	\$0.0	\$0.0	\$0.0	\$0.0
Career & Technical Education	\$56,360.7	\$55,000.0	\$1,360.7	\$20,417.1	\$19,941.6	\$475.5
Career & Technical Education - Technical Prep	\$5,153.5	\$5,000.0	\$153.5	\$1,808.2	\$1,735.8	\$72.5
Charter Schools	\$9,159.8	\$9,000.0	\$159.8	\$320.9	\$254.8	\$66.1
Child Nutrition	\$685,125.1	\$675,000.0	\$10,125.1	\$244,530.8	\$241,222.7	\$3,308.1
IDEA - Deaf Blind, Part C	\$450.0	\$450.0	\$0.0	\$113.6	\$113.6	\$0.0
IDEA - Improvement Plan	\$3,755.0	\$3,200.0	\$555.0	\$1,011.9	\$949.7	\$62.2
IDEA - Model Outreach	\$400.0	\$400.0	\$0.0	\$0.0	\$0.0	\$0.0
IDEA - Pre-School	\$25,854.9	\$25,000.0	\$854.9	\$5,748.5	\$5,523.2	\$225.3
Illinois Purchase Care Review Board	\$353.0	\$0.0	\$353.0	\$122.2	\$0.0	\$122.2
Individuals with Disabilities Educ. Act, Pt. B	\$582,462.1	\$570,000.0	\$12,462.1	\$189,074.1	\$184,515.4	\$4,558.7
Integration of Schools & Mental Health Systems	\$400.0	\$400.0	\$0.0	\$0.0	\$0.0	\$0.0
Learn and Serve America	\$2,661.0	\$2,500.0	\$161.0	\$78.3	\$78.3	\$0.0
Longitudinal Data System	\$2,700.0	\$0.0	\$2,700.0	\$0.0	\$0.0	\$0.0
Math & Science Partnerships	\$15,611.0	\$15,000.0	\$611.0	\$2,389.5	\$2,329.3	\$60.2
National Center for Education Statistics	\$256.7	\$0.0	\$256.7	\$105.3	\$0.0	\$105.3
ONPAR	\$2,000.0	\$2,000.0	\$0.0	\$787.5	\$787.5	\$0.0
Refugee	\$0.0	\$0.0	\$0.0	\$0.0	\$0.0	\$0.0
School Health Programs	\$950.2	\$0.0	\$950.2	\$89.0	\$0.0	\$89.0
Special Congressional Initiatives	\$4,299.7	\$4,220.5	\$79.2	\$33.1	\$0.0	\$33.1
Striving Readers	\$700.3	\$450.3	\$250.0	\$0.0	\$0.0	\$0.0
Title I - Basic Programs	\$674,847.9	\$666,937.0	\$7,910.9	\$151,216.0	\$148,878.3	\$2,337.6
Title I - Comprehensive School Reform	\$35.5	\$0.0	\$35.5	\$0.0	\$0.0	\$0.0
Title I - Education of Migratory Children	\$4,709.5	\$4,663.0	\$46.5	\$553.8	\$534.5	\$19.3
Title I - Even Start Family Literacy Programs	\$3,283.9	\$3,100.0	\$183.9	\$1,205.5	\$1,133.3	\$72.2
Title I - Neglected and Delinquent	\$1,218.0	\$1,200.0	\$18.0	\$581.7	\$576.0	\$5.7
Title I - Reading First	\$62,905.1	\$60,000.0	\$2,905.1	\$5,255.8	\$4,977.0	\$278.8
Title I - School Improvement	\$75,642.9	\$74,100.0	\$1,542.9	\$13,956.0	\$13,623.5	\$332.5
Title II - Enhance Ed through Technology	\$21,024.5	\$20,000.0	\$1,024.5	\$3,890.6	\$3,748.6	\$142.0
Title II - Quality Teachers	\$137,929.7	\$135,000.0	\$2,929.7	\$33,948.9	\$33,518.9	\$430.0

Initiatives	Appropriation			YTD Expenditures		
	Total	Grants	Admin	Total	Grants	Admin
Title III - English Language Acquisition	\$42,547.9	\$40,000.0	\$2,547.9	\$5,793.2	\$5,303.5	\$489.8
Title IV - 21st Century Schools	\$56,682.2	\$55,000.0	\$1,682.2	\$12,565.1	\$12,004.1	\$561.0
Title IV - Safe & Drug Free Schools	\$15,385.8	\$15,000.0	\$385.8	\$3,035.8	\$2,852.5	\$183.3
Title V - Innovative Programs	\$8,185.0	\$8,000.0	\$185.0	\$9.2	\$9.2	\$0.0
Title VI - Rural & Low Income Programs	\$1,535.5	\$1,500.0	\$35.5	\$87.7	\$87.7	\$0.0
Title VI - State Assessment	\$23,780.3	\$0.0	\$23,780.3	\$4,522.3	\$0.0	\$4,522.3
Title X - McKinney Homeless Assistance	\$3,838.4	\$3,250.0	\$588.4	\$1,576.5	\$1,422.7	\$153.8
Transition to Teaching	\$1,127.8	\$1,000.0	\$127.8	\$0.5	\$0.0	\$0.5
<b>TOTAL - ALL FUNDS:</b>	<b>\$11,121,434.2</b>	<b>\$10,951,259.9</b>	<b>\$165,505.5</b>	<b>\$4,119,984.1</b>	<b>\$4,061,462.7</b>	<b>\$58,521.3</b>

**ILLINOIS STATE BOARD OF EDUCATION**  
**Financial Status Report**  
**July 1, 2009 through December 31, 2009**  
**(Fiscal Year 2010)**

	Appropriation Amount	Expenditures to Date	Unexpended Appropriation	Percentage spent YTD	Percentage Unexpended
<b><u>General Revenue Fund</u></b>					
Personal Services and Related Expenditures	18,609,100	8,779,993	9,829,107	47.18%	<b>52.82%</b>
Contractual Services	6,757,200	1,522,521	5,234,679	22.53%	<b>77.47%</b>
Travel	350,000	111,565	238,435	31.88%	<b>68.12%</b>
Commodities	75,000	34,378	40,622	45.84%	<b>54.16%</b>
Printing	93,200	524	92,676	0.56%	<b>99.44%</b>
Equipment	153,900	60,198	93,702	39.11%	<b>60.89%</b>
Telecommunications	486,100	143,612	342,488	29.54%	<b>70.46%</b>
Operation of Automotive Equipment	25,000	5,076	19,924	20.30%	<b>79.70%</b>
Lump Sums	184,272,500	65,140,628	119,131,872	35.35%	<b>64.65%</b>
<b>Sub-total</b>	210,822,000	75,798,494	135,023,506	35.95%	<b>64.05%</b>
Awards and Grants	3,259,594,683	1,318,103,437	1,941,491,246	40.44%	<b>59.56%</b>
<b>Total General Revenue Fund</b>	3,470,416,683	1,393,901,931	2,076,514,752	40.17%	<b>59.83%</b>
<b><u>Education Assistance Fund</u></b>					
Awards and Grants	618,109,900	509,884,740	108,225,160	82.49%	<b>17.51%</b>
<b><u>Common School Fund</u></b>					
General State Aid	3,216,190,100	1,405,969,900	1,810,220,200	43.72%	<b>56.28%</b>
<b><u>Teacher Certification Fee Revolving Fund</u></b>					
Lump Sums	1,600,000	365,304	1,234,696	22.83%	<b>77.17%</b>

**ILLINOIS STATE BOARD OF EDUCATION**  
**Financial Status Report**  
**July 1, 2009 through December 31, 2009**  
**(Fiscal Year 2010)**

	Appropriation Amount	Expenditures to Date	Unexpended Appropriation	Percentage spent YTD	Percentage Unexpended
<b><u>Drivers Education Fund</u></b>					
Personal Services and Related Expenditures	89,000	37,489	51,511	42.12%	<b>57.88%</b>
Awards and Grants	17,929,600	8,960,830	8,968,770	49.98%	<b>50.02%</b>
<b>Total Drivers Education Fund</b>	<b>18,018,600</b>	<b>8,998,319</b>	<b>9,020,281</b>	<b>49.94%</b>	<b>50.06%</b>
<b><u>School Dist. Emergency Financial Asst. Fund</u></b>					
Awards and Grants	1,000,000	21,875	978,125	2.19%	<b>97.81%</b>
<b><u>SBE Special Purpose Trust Fund</u></b>					
Lump Sums	15,500,000	1,446,122	14,053,878	9.33%	<b>90.67%</b>
<b><u>SBE Teacher Certification Institution Fund</u></b>					
Lump Sums	1,008,900	139,812	869,088	13.86%	<b>86.14%</b>
<b><u>SBE Federal Department of Agriculture Fund</u></b>					
Personal Services and Related Expenditures	5,273,800	2,432,911	2,840,889	46.13%	<b>53.87%</b>
Contractual Services	4,010,000	734,339	3,275,661	18.31%	<b>81.69%</b>
Travel	400,000	114,527	285,473	28.63%	<b>71.37%</b>
Commodities	85,000	3,854	81,146	4.53%	<b>95.47%</b>
Printing	156,300	2,485	153,816	1.59%	<b>98.41%</b>
Equipment	150,000	19,973	130,027	13.32%	<b>86.68%</b>
Telecommunications	50,000	-	50,000	0.00%	<b>100.00%</b>
<b>Sub-total</b>	<b>10,125,100</b>	<b>3,308,088</b>	<b>6,817,012</b>	<b>32.67%</b>	<b>67.33%</b>
Awards and Grants	678,657,300	244,759,705	433,897,595	36.07%	<b>63.93%</b>
<b>Total SBE Federal Department of Agriculture Fund</b>	<b>688,782,400</b>	<b>248,067,793</b>	<b>440,714,607</b>	<b>36.02%</b>	<b>63.98%</b>

**ILLINOIS STATE BOARD OF EDUCATION**  
**Financial Status Report**  
**July 1, 2009 through December 31, 2009**  
**(Fiscal Year 2010)**

	Appropriation Amount	Expenditures to Date	Unexpended Appropriation	Percentage spent YTD	Percentage Unexpended
<b><u>SBE Federal Agency Services Fund</u></b>					
Personal Services and Related Expenditures	140,500	67,148	73,352	47.79%	<b>52.21%</b>
Contractual Services	900,000	18,901	881,099	2.10%	<b>97.90%</b>
Travel	30,000	2,978	27,022	9.93%	<b>90.07%</b>
Commodities	20,000	-	20,000	0.00%	<b>100.00%</b>
Printing	700	-	700	0.00%	<b>100.00%</b>
Equipment	11,000	-	11,000	0.00%	<b>100.00%</b>
Telecommunications	9,000	-	9,000	0.00%	<b>100.00%</b>
<b>Sub-total</b>	<b>1,111,200</b>	<b>89,027</b>	<b>1,022,173</b>	<b>8.01%</b>	<b>91.99%</b>
Awards and Grants	2,500,000	78,336	2,421,664	3.13%	<b>96.87%</b>
<b>Total SBE Federal Agency Services Fund</b>	<b>3,611,200</b>	<b>167,363</b>	<b>3,443,837</b>	<b>4.63%</b>	<b>95.37%</b>
<b><u>SBE Federal Department of Education Fund</u></b>					
Personal Services and Related Expenditures	19,514,500	7,385,480	12,129,020	37.85%	<b>62.15%</b>
Contractual Services	16,400,000	2,995,630	13,404,370	18.27%	<b>81.73%</b>
Travel	1,600,000	298,503	1,301,497	18.66%	<b>81.34%</b>
Commodities	305,000	8,086	296,914	2.65%	<b>97.35%</b>
Printing	341,000	9,325	331,675	2.73%	<b>97.27%</b>
Equipment	455,000	57,539	397,461	12.65%	<b>87.35%</b>
Telecommunications	400,000	-	400,000	0.00%	<b>100.00%</b>
Lump Sums	23,780,300	4,522,272	19,258,028	19.02%	<b>80.98%</b>
<b>Sub-total</b>	<b>62,795,800</b>	<b>15,276,835</b>	<b>47,518,965</b>	<b>24.33%</b>	<b>75.67%</b>
Awards and Grants	2,882,260,537	535,291,941	2,346,968,596	18.57%	<b>81.43%</b>
<b>Total SBE Federal Department of Education Fund</b>	<b>2,945,056,337</b>	<b>550,568,776</b>	<b>2,394,487,561</b>	<b>18.69%</b>	<b>81.31%</b>
<b><u>Charter Schools Revolving Loan Program Fund</u></b>					
Awards and Grants	20,000	-	20,000	0.00%	<b>100.00%</b>
<b><u>School Infrastructure Fund</u></b>					
Personal Services and Related Expenditures	120,100	53,771	66,329	44.77%	<b>55.23%</b>

**ILLINOIS STATE BOARD OF EDUCATION**  
**Financial Status Report**  
**July 1, 2009 through December 31, 2009**  
**(Fiscal Year 2010)**

	Appropriation Amount	Expenditures to Date	Unexpended Appropriation	Percentage spent YTD	Percentage Unexpended
<b><u>School Technology Revolving Loan Program Fund</u></b>					
Awards and Grants	5,000,000	-	5,000,000	0.00%	<b>100.00%</b>
<b><u>Temporary Relocation Expenses Revolving Grant Fund</u></b>					
Awards and Grants	2,000,000	498,349	1,501,651	24.92%	<b>75.08%</b>
<b><u>Capital Development Fund</u></b>					
Grants for Educational Purposes	25,000,000	-	25,000,000	0.00%	<b>100.00%</b>
<b><u>School Construction Fund</u></b>					
Construction Grants	100,000,000	-	100,000,000	0.00%	<b>100.00%</b>
<b><u>Build Illinois Bond Fund</u></b>					
Construction Grants	10,000,000	-	10,000,000	0.00%	<b>100.00%</b>
<b>ISBE TOTALS</b>	<b>11,121,434,220</b>	<b>4,120,084,054</b>	<b>7,001,350,166</b>	<b>37.05%</b>	<b>62.95%</b>

**ILLINOIS STATE BOARD OF EDUCATION**  
**Combined Financial Status Report**  
**July 1, 2009 through December 31, 2009**  
**(Fiscal Year 2010)**

	Appropriation Amount	Expenditures to Date (Direct)	Federal Indirect Cost Recovery Expenditures	Unexpended Appropriation	Percentage spent YTD	Percentage Unexpended
<b><i>All Funds</i></b>						
Personal Services and Related Expenditures	44,775,174	18,756,791	1,028,174	24,990,209	41.89%	55.81%
Contractual Services	28,231,358	5,271,391	164,158	22,795,809	18.67%	80.75%
Travel	2,396,022	527,573	16,022	1,852,427	22.02%	77.31%
Commodities	485,000	46,319	-	438,681	9.55%	90.45%
Printing	591,200	12,333	-	578,867	2.09%	97.91%
Equipment	837,057	137,709	67,157	632,191	16.45%	75.53%
Telecommunications	987,839	143,612	42,739	801,488	14.54%	81.14%
Operation of Automotive Equipment	25,000	5,076	-	19,924	20.30%	79.70%
Lump Sums	224,843,450	70,295,888	-	154,547,563	31.26%	68.74%
<b>Sub-total</b>	<b>303,172,100</b>	<b>96,514,940</b>	<b>1,318,250</b>	<b>206,657,160</b>	<b>31.84%</b>	<b>68.16%</b>
Awards and Grants	10,708,262,120	4,023,569,114	-	6,684,693,006	37.57%	62.43%
Construction Grants	110,000,000	-	-	110,000,000	0.00%	100.00%
<b>Total All Funds</b>	<b>11,121,434,220</b>	<b>4,118,765,804</b>	<b>1,318,250</b>	<b>7,001,350,166</b>	<b>37.03%</b>	<b>62.95%</b>

***General Revenue Fund***

Personal Services and Related Expenditures	18,609,100	8,779,993	-	9,829,107	47.18%	52.82%
Contractual Services	6,757,200	1,522,521	-	5,234,679	22.53%	77.47%
Travel	350,000	111,565	-	238,435	31.88%	68.12%
Commodities	75,000	34,378	-	40,622	45.84%	54.16%
Printing	93,200	524	-	92,676	0.56%	99.44%
Equipment	153,900	60,198	-	93,702	39.11%	60.89%
Telecommunications	486,100	143,612	-	342,488	29.54%	70.46%
Operation of Automotive Equipment	25,000	5,076	-	19,924	20.30%	79.70%
Lump Sums	184,272,500	65,140,628	-	119,131,872	35.35%	64.65%
<b>Sub-total</b>	<b>210,822,000</b>	<b>75,798,494</b>	<b>-</b>	<b>135,023,506</b>	<b>35.95%</b>	<b>64.05%</b>
Awards and Grants	3,259,594,683	1,318,103,437	-	1,941,491,246	40.44%	59.56%
<b>Total General Revenue Fund</b>	<b>3,470,416,683</b>	<b>1,393,901,931</b>	<b>-</b>	<b>2,076,514,752</b>	<b>40.17%</b>	<b>59.83%</b>

***Other State Funds***

Personal Services and Related Expenditures	209,100	91,260	-	117,840	43.64%	56.36%
Lump Sums	18,108,900	1,951,238	-	16,157,662	10.78%	89.22%
<b>Sub-total</b>	<b>18,318,000</b>	<b>2,042,497</b>	<b>-</b>	<b>16,275,503</b>	<b>11.15%</b>	<b>88.85%</b>
Awards and Grants	3,885,249,600	1,925,335,694	-	1,959,913,906	49.56%	50.44%
Construction Grants	110,000,000	-	-	110,000,000	0.00%	100.00%
<b>Total Other State Funds</b>	<b>4,013,567,600</b>	<b>1,927,378,192</b>	<b>-</b>	<b>2,086,189,408</b>	<b>48.02%</b>	<b>51.98%</b>

***Federal Funds***

Personal Services and Related Expenditures	24,928,800	9,885,539	-	15,043,261	39.66%	60.34%
Contractual Services	21,310,000	3,748,870	-	17,561,130	17.59%	82.41%
Travel	2,030,000	416,008	-	1,613,992	20.49%	79.51%
Commodities	410,000	11,940	-	398,060	2.91%	97.09%
Printing	498,000	11,809	-	486,191	2.37%	97.63%
Equipment	616,000	77,511	-	538,489	12.58%	87.42%
Telecommunications	459,000	-	-	459,000	0.00%	100.00%
Lump Sums	23,780,300	4,522,272	-	19,258,028	19.02%	80.98%
<b>Sub-total</b>	<b>74,032,100</b>	<b>18,673,949</b>	<b>-</b>	<b>55,358,151</b>	<b>25.22%</b>	<b>74.78%</b>
Awards and Grants	3,563,417,837	780,129,983	-	2,783,287,854	21.89%	78.11%
<b>Total Federal Funds</b>	<b>3,637,449,937</b>	<b>798,803,931</b>	<b>-</b>	<b>2,838,646,006</b>	<b>21.96%</b>	<b>78.04%</b>

**ILLINOIS STATE BOARD OF EDUCATION**  
**Awards and Grants Expenditures**  
**July 1, 2009 through December 31, 2009**  
**(Fiscal Year 2010)**

<u><b>General Revenue Fund</b></u>	Appropriation Amount	Expenditures to Date	Unexpended Appropriation	Percentage spent YTD	Percentage Unexpended
Advanced Placement Classes	811,900	463,461	348,439	57.08%	<b>42.92%</b>
Agriculture Education	3,043,100	1,924,610	1,118,490	63.25%	<b>36.75%</b>
Arts and Foreign Language	2,000,000	828,028	1,171,972	41.40%	<b>58.60%</b>
Bilingual Education	68,086,800	7,039,739	61,047,061	10.34%	<b>89.66%</b>
Vocational Education Career and Technical Education	38,562,100	20,866,943	17,695,157	54.11%	<b>45.89%</b>
Early Childhood Education	206,596,225	85,806,352	120,789,873	41.53%	<b>58.47%</b>
Early Childhood Block Grant - SFSF General	131,472,700	57,562,438	73,910,262	43.78%	<b>56.22%</b>
Bridges Extended Learning	20,715,300	13,334,327	7,380,973	64.37%	<b>35.63%</b>
Standards, Assessments and Accountability	1,646,400	-	1,646,400	0.00%	<b>100.00%</b>
Technology for Success	2,719,700	1,387,830	1,331,870	51.03%	<b>48.97%</b>
K-6 Reading Improvement Block Grant	68,525,700	24,527,458	43,998,242	35.79%	<b>64.21%</b>
ROE School Bus Driver Training	70,000	70,000	-	100.00%	<b>0.00%</b>
ROE and ISC Operations Reimbursement	4,912,000	3,020,845	1,891,155	61.50%	<b>38.50%</b>
Supervisory Expense	102,000	102,000	-	100.00%	<b>0.00%</b>
Autism Training & Technical Assistance	100,000	-	100,000	0.00%	<b>100.00%</b>
Recording for Blind and Dyslexic	816,600	600,000	216,600	73.48%	<b>26.52%</b>
Children's Mental Health Partnership	2,333,800	1,330,199	1,003,601	57.00%	<b>43.00%</b>
Educational Materials Unit	1,421,100	810,000	611,100	57.00%	<b>43.00%</b>
Philip Rock Center Reimbursement	3,577,800	1,900,000	1,677,800	53.11%	<b>46.89%</b>
ADA School Safety & Education Block Grant	18,710,300	9,355,159	9,355,141	50.00%	<b>50.00%</b>
Alternative Education/Regional Safe Schools	16,682,000	7,642,351	9,039,649	45.81%	<b>54.19%</b>
Re-enrollment Student Program	3,600,000	2,000,000	1,600,000	55.56%	<b>44.44%</b>
Illinois Breakfast Incentive	361,800	106,434	255,366	29.42%	<b>70.58%</b>
Truant Alternative/Optional Education	18,070,300	12,099,507	5,970,793	66.96%	<b>33.04%</b>
Grow Your Own Teachers	2,807,969	1,009,376	1,798,593	35.95%	<b>64.05%</b>
National Board Certification Reimbursement	5,742,500	-	5,742,500	0.00%	<b>100.00%</b>
Teach America	225,000	122,790	102,210	54.57%	<b>45.43%</b>
Teachers and Administrators Mentoring	9,276,371	-	9,276,371	0.00%	<b>100.00%</b>
Reorganization Incentive	3,400,000	3,022,204	377,796	88.89%	<b>11.11%</b>
Reorganization Incentive Feasibility Study	300,000	-	300,000	0.00%	<b>100.00%</b>
Special Education-Private Tuition	181,100,000	134,205,637	46,894,363	74.11%	<b>25.89%</b>
Special Education-Extraordinary	334,236,800	118,319,850	215,916,950	35.40%	<b>64.60%</b>
Special Education-Personnel	459,600,000	198,942,448	260,657,552	43.29%	<b>56.71%</b>
Special Education-Orphanage Tuition	120,200,000	77,095,458	43,104,542	64.14%	<b>35.86%</b>
Special Education-Regular Transportation	351,100,000	172,897,496	178,202,504	49.24%	<b>50.76%</b>
Special Education-Transportation	429,700,000	140,272,712	289,427,288	32.64%	<b>67.36%</b>
Free Lunch/Breakfast	26,300,000	18,113,421	8,186,579	68.87%	<b>31.13%</b>
Textbook Loan Program-FY09 Reappropriation	39,665,883	34,227,794	5,438,089	86.29%	<b>13.71%</b>

**ILLINOIS STATE BOARD OF EDUCATION**  
**Awards and Grants Expenditures**  
**July 1, 2009 through December 31, 2009**  
**(Fiscal Year 2010)**

	Appropriation Amount	Expenditures to Date	Unexpended Appropriation	Percentage spent YTD	Percentage Unexpended
<b><u>General Revenue Fund, continued</u></b>					
Orphanage Tuition	13,000,000	6,076,313	6,923,687	46.74%	<b>53.26%</b>
Special Education-Summer School	11,700,000	11,602,507	97,493	99.17%	<b>0.83%</b>
General State Aid-SFSF Education	601,717,200	-	601,717,200	0.00%	<b>100.00%</b>
General State Aid-SFSF General	189,058,500	189,058,500	-	100.00%	<b>0.00%</b>
Tax Equivalent Grants	222,600	222,600	-	100.00%	<b>0.00%</b>
After School Matters	5,000,000	2,135,430	2,864,570	42.71%	<b>57.29%</b>
Classroom Cubed	1,000,000	-	1,000,000	0.00%	<b>100.00%</b>
<b>Total General Revenue Fund</b>	<b>3,400,290,448</b>	<b>1,360,102,216</b>	<b>2,040,188,232</b>	<b>40.00%</b>	<b>60.00%</b>
<b><u>Education Assistance Fund</u></b>					
General State Aid	602,439,300	494,214,140	108,225,160	82.04%	<b>17.96%</b>
General State Aid - Hold Harmless	15,670,600	15,670,599	1	100.00%	<b>0.00%</b>
<b>Total Education Assistance Fund</b>	<b>618,109,900</b>	<b>509,884,740</b>	<b>108,225,160</b>	<b>82.49%</b>	<b>17.51%</b>
<b><u>Common School Fund</u></b>					
Compensation for Regional Superintendents and Asst. Superintendents	9,100,000	4,431,192	4,668,808	48.69%	<b>51.31%</b>
General State Aid	3,207,090,100	1,401,538,708	1,805,551,392	43.70%	<b>56.30%</b>
<b>Total Common School Fund</b>	<b>3,216,190,100</b>	<b>1,405,969,900</b>	<b>1,810,220,200</b>	<b>43.72%</b>	<b>56.28%</b>
<b><u>Drivers Education Fund</u></b>					
Driver Education Grants	17,929,600	8,960,830	8,968,770	49.98%	<b>50.02%</b>
<b>Total Drivers Education Fund</b>	<b>17,929,600</b>	<b>8,960,830</b>	<b>8,968,770</b>	<b>49.98%</b>	<b>50.02%</b>
<b><u>School Dist. Emergency Financial Asst. Fund</u></b>					
School District Emergency Financial Assistance	1,000,000	21,875	978,125	2.19%	<b>97.81%</b>
<b>Total School Dist. Emergency Fin. Asst. Fund</b>	<b>1,000,000</b>	<b>21,875</b>	<b>978,125</b>	<b>2.19%</b>	<b>97.81%</b>

**ILLINOIS STATE BOARD OF EDUCATION**  
**Awards and Grants Expenditures**  
**July 1, 2009 through December 31, 2009**  
**(Fiscal Year 2010)**

	Appropriation Amount	Expenditures to Date	Unexpended Appropriation	Percentage spent YTD	Percentage Unexpended
<b><u>SBE Federal Department of Agriculture Fund</u></b>					
Federal Nutrition Programs	675,000,000	241,222,712	433,777,288	35.74%	<b>64.26%</b>
ARRA	3,657,300	3,536,993	120,307	96.71%	<b>3.29%</b>
<b>Total SBE Federal Department of Agriculture Fund</b>	<b>678,657,300</b>	<b>244,759,705</b>	<b>433,897,595</b>	<b>36.07%</b>	<b>63.93%</b>
<b><u>SBE Federal Agency Services Fund</u></b>					
Learn and Serve America	2,500,000	78,336	2,421,664	3.13%	<b>96.87%</b>
<b>Total SBE Federal Agency Services Fund</b>	<b>2,500,000</b>	<b>78,336</b>	<b>2,421,664</b>	<b>3.13%</b>	<b>96.87%</b>
<b><u>SBE Federal Department of Education Fund</u></b>					
Title VI Rural and Low Income Students	1,500,000	87,717	1,412,283	5.85%	<b>94.15%</b>
Title III - English Language Acquisition	40,000,000	5,303,450	34,696,550	13.26%	<b>86.74%</b>
Integration of Mental Health	400,000	-	400,000	0.00%	<b>100.00%</b>
ONPAR	2,000,000	787,462	1,212,538	39.37%	<b>60.63%</b>
Enhancing Education Through Technology	20,000,000	3,748,598	16,251,402	18.74%	<b>81.26%</b>
Charter Schools	9,000,000	254,800	8,745,200	2.83%	<b>97.17%</b>
Advanced Placement Fee	2,000,000	1,192,794	807,206	59.64%	<b>40.36%</b>
Title I - Basic	750,000,000	164,745,639	585,254,361	21.97%	<b>78.03%</b>
Title I - Reading First	60,000,000	4,976,963	55,023,037	8.29%	<b>91.71%</b>
Title IV - Safe & Drug Free Schools	15,000,000	2,852,514	12,147,486	19.02%	<b>80.98%</b>
Title IV - 21st Century/Community Service	55,000,000	12,004,071	42,995,929	21.83%	<b>78.17%</b>
Title II - Teacher Quality	135,000,000	33,518,925	101,481,075	24.83%	<b>75.17%</b>
Title II - Transition to Teaching	1,000,000	-	1,000,000	0.00%	<b>100.00%</b>
Title II - Math/Science Partnerships	15,000,000	2,329,296	12,670,704	15.53%	<b>84.47%</b>
Title X - McKinney Homeless	3,250,000	1,422,695	1,827,305	43.78%	<b>56.22%</b>
Longitudinal Data Systems	2,700,000	-	2,700,000	0.00%	<b>100.00%</b>
IDEA - Preschool	25,000,000	5,523,213	19,476,787	22.09%	<b>77.91%</b>
IDEA - Improvement	3,200,000	949,729	2,250,271	29.68%	<b>70.32%</b>
IDEA	570,000,000	184,515,396	385,484,604	32.37%	<b>67.63%</b>
IDEA - Model Outreach	400,000	-	400,000	0.00%	<b>100.00%</b>

**ILLINOIS STATE BOARD OF EDUCATION**  
**Awards and Grants Expenditures**  
**July 1, 2009 through December 31, 2009**  
**(Fiscal Year 2010)**

	Appropriation Amount	Expenditures to Date	Unexpended Appropriation	Percentage spent YTD	Percentage Unexpended
<b><u>SBE Federal Department of Education Fund, continued</u></b>					
IDEA - Deaf/Blind	450,000	113,629	336,371	25.25%	74.75%
Career and Technical Education - Basic Perkins	55,000,000	19,941,631	35,058,369	36.26%	63.74%
Career and Technical Education - Tech Prep	5,000,000	1,735,759	3,264,241	34.72%	65.28%
Special Federal Congressional Initiatives	4,220,500	-	4,220,500	0.00%	100.00%
Striving Readers	435,300	-	435,300	0.00%	100.00%
Title I ARRA	544,464,516	10,294,341	534,170,175	1.89%	98.11%
IDEA ARRA	506,479,753	74,306,761	432,172,992	14.67%	85.33%
IDEA Preschool ARRA	18,311,491	3,022,419	15,289,072	16.51%	83.49%
Enhancing Education Through Technology-ARRA	26,523,208	-	26,523,208	0.00%	100.00%
Title X-Homeless Education ARRA	2,581,569	1,621,838	959,731	62.82%	37.18%
Title V Innovative Programs	8,000,000	9,210	7,990,790	0.12%	99.88%
<b>Total SBE Federal Department of Education Fund</b>	<b>2,881,916,337</b>	<b>535,258,849</b>	<b>2,346,657,488</b>	<b>18.57%</b>	<b>81.43%</b>
<b><u>Charter Schools Revolving Loan Program Fund</u></b>					
Charter Schools Revolving Loans	20,000	-	20,000	0.00%	100.00%
<b>Total Charter Schools Rev. Loan Program Fund</b>	<b>20,000</b>	<b>-</b>	<b>20,000</b>	<b>0.00%</b>	<b>100.00%</b>
<b><u>School Technology Revolving Loan Program Fund</u></b>					
School Technology Revolving Loans	5,000,000	-	5,000,000	0.00%	100.00%
<b>Total School Technology Rev. Loan Program Fund</b>	<b>5,000,000</b>	<b>-</b>	<b>5,000,000</b>	<b>0.00%</b>	<b>100.00%</b>
<b><u>Temporary Relocation Expenses Revolving Grant Fund</u></b>					
Temporary Relocation Revolving Loans/Grants	2,000,000	498,349	1,501,651	24.92%	75.08%
<b>Total Temporary Relocation Exp. Rev. Grant Fund</b>	<b>2,000,000</b>	<b>498,349</b>	<b>1,501,651</b>	<b>24.92%</b>	<b>75.08%</b>
<b><u>Capital Development Fund</u></b>					
Grants for Educational Purposes	25,000,000	-	25,000,000	0.00%	100.00%
<b>Total Capital Development Fund</b>	<b>25,000,000</b>	<b>-</b>	<b>25,000,000</b>	<b>0.00%</b>	<b>100.00%</b>

**ILLINOIS STATE BOARD OF EDUCATION**  
**Awards and Grants Expenditures**  
**July 1, 2009 through December 31, 2009**  
**(Fiscal Year 2010)**

	Appropriation Amount	Expenditures to Date	Unexpended Appropriation	Percentage spent YTD	Percentage Unexpended
<b><u>School Construction Fund</u></b>					
Construction Grants	100,000,000	-	100,000,000	0.00%	<b>100.00%</b>
<b>Total School Construction Fund</b>	<b>100,000,000</b>	<b>-</b>	<b>100,000,000</b>	<b>0.00%</b>	<b>100.00%</b>
<b><u>Build Illinois Bond Fund</u></b>					
Construction Grants	10,000,000	-	10,000,000	0.00%	<b>100.00%</b>
<b>Total Build Illinois Bond Fund</b>	<b>10,000,000</b>	<b>-</b>	<b>10,000,000</b>	<b>0.00%</b>	<b>100.00%</b>
 <b>TOTAL AWARDS AND GRANTS - ALL FUNDS</b>	 <b>10,958,613,685</b>	 <b>4,065,534,801</b>	 <b>6,893,078,884</b>	 <b>37.10%</b>	 <b>62.90%</b>

**ILLINOIS STATE BOARD OF EDUCATION**  
**Comparative Statement of Expenditures to Date (December 31)**  
**Fiscal Years 2010 and 2009**

	<b>FY10</b>				<b>FY09</b>			
	Appropriation Amount	Expenditures to Date (Direct)	Federal Indirect Cost Recovery Expenditures	Percentage to Date	Appropriation Amount	Expenditures to Date (Direct)	Federal Indirect Cost Recovery Expenditures	Percentage to Date
<b>All Funds</b>								
Personal Services and Related Expenditures	44,775,174	18,756,791	1,028,174	44.19%	42,994,273	18,868,059	2,776,573	43.89%
Contractual Services	28,231,358	5,271,391	164,158	19.25%	25,426,546	6,694,368	718,846	26.33%
Travel	2,396,022	527,573	16,022	22.69%	2,151,592	482,034	57,892	22.40%
Commodities	485,000	46,319	-	9.55%	503,170	68,556	39,070	13.62%
Printing	591,200	12,333	-	2.09%	583,200	36,257	-	6.22%
Equipment	837,057	137,709	67,157	24.47%	791,733	36,383	104,833	4.60%
Telecommunications	987,839	143,612	42,739	18.86%	1,037,367	122,019	109,767	11.76%
Operation of Automotive Equipment	25,000	5,076	-	20.30%	20,000	6,611	-	33.06%
Lump Sums	224,843,450	70,295,888	-	31.26%	71,584,219	7,676,735	-	10.72%
<b>Sub-total</b>	<b>303,172,100</b>	<b>95,196,691</b>	<b>1,318,250</b>	<b>31.84%</b>	<b>145,092,100</b>	<b>33,991,022</b>	<b>3,806,981</b>	<b>23.43%</b>
Awards and Grants	10,708,262,120	4,023,569,114	-	37.57%	9,643,951,793	3,999,317,754	-	41.47%
Construction Grants	110,000,000	-	-	0.00%	-	-	-	0.00%
<b>Total All Funds</b>	<b>11,121,434,220</b>	<b>4,118,765,804</b>	<b>1,318,250</b>	<b>37.05%</b>	<b>9,789,043,893</b>	<b>4,033,308,776</b>	<b>3,806,981</b>	<b>41.20%</b>
<b>General Revenue Fund</b>								
Personal Services and Related Expenditures	18,609,100	8,779,993	-	47.18%	17,375,800	9,494,135	-	54.64%
Contractual Services	6,757,200	1,522,521	-	22.53%	5,857,200	3,381,154	-	57.73%
Travel	350,000	111,565	-	31.88%	313,700	119,078	-	37.96%
Commodities	75,000	34,378	-	45.84%	59,100	38,024	-	64.34%
Printing	93,200	524	-	0.56%	85,200	23,409	-	27.48%
Equipment	153,900	60,198	-	39.11%	70,900	6,714	-	9.47%
Telecommunications	486,100	143,612	-	29.54%	468,600	122,019	-	26.04%
Operation of Automotive Equipment	25,000	5,076	-	20.30%	20,000	6,611	-	33.06%
Lump Sums	184,272,500	65,140,628	-	35.35%	33,502,000	5,689,511	-	16.98%
<b>Sub-total</b>	<b>210,822,000</b>	<b>75,798,494</b>	<b>-</b>	<b>35.95%</b>	<b>57,752,500</b>	<b>18,880,655</b>	<b>-</b>	<b>32.69%</b>
Awards and Grants	3,259,594,683	1,318,103,437	-	40.44%	2,543,734,893	1,163,723,184	-	45.75%
<b>Total General Revenue Fund</b>	<b>3,470,416,683</b>	<b>1,393,901,931</b>	<b>-</b>	<b>40.17%</b>	<b>2,601,487,393</b>	<b>1,182,603,839</b>	<b>-</b>	<b>45.46%</b>
<b>Other State Funds</b>								
Personal Services and Related Expenditures	209,100	91,260	-	43.64%	193,800	86,651	-	44.71%
Lump Sums	18,108,900	1,951,238	-	10.78%	18,108,900	2,051,034	-	11.33%
<b>Sub-total</b>	<b>18,318,000</b>	<b>2,042,497</b>	<b>-</b>	<b>11.15%</b>	<b>18,302,700</b>	<b>2,137,685</b>	<b>-</b>	<b>11.68%</b>
Awards and Grants	3,885,249,600	1,925,335,694	-	49.56%	4,874,216,900	2,248,659,100	-	46.13%
Construction Grants	110,000,000	-	-	0.00%	-	-	-	0.00%
<b>Total Other State Funds</b>	<b>4,013,567,600</b>	<b>1,927,378,192</b>	<b>-</b>	<b>48.02%</b>	<b>4,892,519,600</b>	<b>2,250,796,785</b>	<b>-</b>	<b>46.00%</b>
<b>Federal Funds</b>								
Personal Services and Related Expenditures	24,928,800	9,885,539	-	39.66%	22,648,100	9,287,273	-	41.01%
Contractual Services	21,310,000	3,748,870	-	17.59%	18,850,500	3,313,214	-	17.58%
Travel	2,030,000	416,008	-	20.49%	1,780,000	362,956	-	20.39%
Commodities	410,000	11,940	-	2.91%	405,000	30,532	-	7.54%
Printing	498,000	11,809	-	2.37%	498,000	12,848	-	2.58%
Equipment	616,000	77,511	-	12.58%	616,000	29,669	-	4.82%
Telecommunications	459,000	-	-	0.00%	459,000	-	-	0.00%
Lump Sums	23,780,300	4,522,272	-	19.02%	23,780,300	3,743,171	-	15.74%
<b>Sub-total</b>	<b>74,032,100</b>	<b>18,673,949</b>	<b>-</b>	<b>25.22%</b>	<b>69,036,900</b>	<b>16,779,663</b>	<b>-</b>	<b>24.31%</b>
Awards and Grants	3,563,417,837	780,129,983	-	21.89%	2,226,000,000	586,935,470	-	26.37%
<b>Total Federal Funds</b>	<b>3,637,449,937</b>	<b>798,803,931</b>	<b>-</b>	<b>21.96%</b>	<b>2,295,036,900</b>	<b>603,715,133</b>	<b>-</b>	<b>26.31%</b>

**ILLINOIS STATE BOARD OF EDUCATION  
FINANCIAL STATUS REPORT - 07/01/09 THROUGH 12/31/09  
FY 10**

	<u>Approp Amount</u>	<u>Expended Year to Date</u>	<u>% Spent Year to Date</u>	<u>December Expenditures</u>	<u>Description</u>
Personal Services and Related	52,617.0	24,556.3	46.7%	3,873.0	Salaries & Benefits
Contractual Services	110,418.0	32,854.3	29.8%	7,381.8	Agency Contracts (see below); Non-Employee Travel; Conferences; Registration Fees
Travel	2,552.2	576.9	22.6%	120.9	Staff Travel
Commodities	785.3	74.5	9.5%	8.7	Supplies; Books
Printing	920.5	12.3	1.3%	2.3	Agency Printing
Equipment	954.4	253.3	26.5%	31.7	Computers; Printers; Furniture
Telecommunications	1,152.9	188.5	16.4%	34.1	Telecommunications Expenses
Auto Operations	25.0	5.1	20.3%	1.8	Operation of Agency Autos
Prompt Payment Act	0.0	0.0	0.0%	0.0	Prompt Payment
Refunds	0.1	0.1	100.0%	0.0	Refunds
Temp. Relocation Revolving Fund	100.0	100.0	100.0%	0.0	Interfund Cash Transfer
Grants	10,841,908.8	4,061,462.7	37.5%	996,579.1	See Detail Below
School Construction Grants	110,000.0	0.0	0.0%	0	School Construction Funds

	<u>Funded Amount</u>	<u>Expended Year to Date</u>	<u>% Spent Year to Date</u>	<u>November Expenditures</u>	<u>Description</u>
<b>Agency Contracts Breakdown:</b>					
<u>State Superintendent</u>					
John Perkins					School District Liaison
GRF	79.0	28.2	35.7%	7.4	
University of Illinois					To assist with Board priorities; serve on senior leadership team, etc.
GRF	140.4	58.5	41.7%	11.7	
Illinois State University					Gates Foundation to align IL Learning Standards and Assessments with college work
Other State	80.0	20.0	25.0%	0.0	readiness standards
<u>Human Resources</u>					
K & L Gates LLP (formerly Bell, Boyd and Lloyd)					Arbitration matters
GRF	103.1	74.4	72.2%	35.1	
Other State	75.0	0.0	0.0%	0.0	
<u>Administrative Services</u>					
Xerox Corp					Copier Maintenance Repairs
GRF	185.0	43.8	23.7%	9.1	
Alzina					Building lease in Springfield
GRF	1,568.9	441.3	28.1%	0.0	
Other State	212.9	0.0	0.0%	0.0	
Federal	875.2	875.2	100.0%	0.0	
Facilities Management					Rent for Chicago Office, Thompson Center
GRF	90.7	32.0	35.3%	7.9	
Other State	20.3	0.0	0.0%	0.0	
Federal	178.0	64.3	36.1%	16.1	

	<u>Funded Amount</u>	<u>Expended Year to Date</u>	<u>% Spent Year to Date</u>	<u>November Expenditures</u>	<u>Description</u>
<u>General Counsel/Legal</u>					
42 Impartial Hearing Officers					Teacher Dismissal Hearing Officers
GRF	193.5	49.8	25.7%	10.1	
Franczek, Sullivan PC					Attorney General's Office appointed Res Vazquez to continue as Legal Counsel for the ongoing implementation and monitoring of the Corey H. consent decree
GRF	120.0	31.4	26.2%	5.9	
Shefsky & Froelich LTD					Prosecution of Educator misconduct cases and any other cases ISBE may request
GRF	100.0	46.0	46.0%	17.5	
DeBlasio Law Group					Litigation for recovery of grant funds
GRF	50.0	16.5	33.0%	8.2	
Holland & Knight, LLB					American Recovery Reinvestment Act Technical & Legal Assistance
GRF	96.2	86.2	89.6%	0.0	
Other State	100.0	100.0	100.0%	100.0	
<u>Data Systems</u>					
IBM					Development of Statewide Student Information System
GRF	975.0	480.0	49.2%	0.0	
Federal	1,345.0	480.0	35.7%	160.0	
Utilistar					Data analysis and reporting for Supplemental Education Services
Federal	60.0	26.8	44.7%	0.0	
Ashbaugh & Associates					Project Leader for Child Nutrition System - MY08211
Federal	174.9	70.5	40.3%	12.5	
Ashbaugh & Associates					Two programmers for Child Nutrition System/ACES - 187
Federal	308.8	116.7	37.8%	20.8	
Capitol Strategies					Programmer for Child Nutrition/ ACES - MY07211
Federal	93.7	70.2	74.9%	17.8	
Capitol Strategies					Programmer for Entity System - MY07212
GRF	151.4	61.0	40.3%	16.0	
Capitol Strategies					Two Programmers for Child Nutrition System - MY08212
Federal	304.8	134.3	44.1%	36.0	
Ashbaugh & Associates					Programmer for Teacher Certification Information System and Educator Certification System MY09212
Other State	159.1	58.4	36.7%	9.1	
Hupp Information Technologies					Programmer for support of EDFacts/EDEN
Federal	71.9	33.1	46.0%	4.4	
<u>Technology Support</u>					
Dell Marketing LP					CMS master lease agreement - 5 year lease of Storage Area Network and server products and components including Pro-Support Warranty
GRF	135.4	135.4	100.0%	0.0	
Other State	109.6	109.6	100.0%	0.0	
Federal	78.2	78.2	100.0%	0.0	
<u>Curriculum &amp; Instruction</u>					
IL Caucus for Adolescent Health					HIV Prevention Education
Federal	60.0	18.9	31.5%	0.0	
MGT of America, Inc.					Reading First Statewide Evaluation
Federal	89.5	22.4	25.0%	-7.5	
Elizabeth Oyer					Evaluation and Research of Illinois Math & Science Partnerships Program
Federal	83.8	0.0	0.0%	0.0	
Sangamon County ROE					Statewide Education Initiatives
Federal	194.7	12.7	6.5%	0.0	
Peoria County ROE					Administer, plan and implement the IL Virtual School (IVS) Program
GRF	1,449.8	774.8	53.4%	125.0	
Federal	200.0	0.0	0.0%	0.0	

	<u>Funded Amount</u>	<u>Expended Year to Date</u>	<u>% Spent Year to Date</u>	<u>November Expenditures</u>	<u>Description</u>
Northern Illinois University					A "live data" website for an Illinois Interactive Report Card
GRF	594.3	313.3	52.7%	0.0	
Federal	658.7	0.0	0.0%	0.0	
The Center: Resources for Teaching and					Learn and Serve - K - 12
Federal	111.0	22.0	19.8%	11.0	
The Center: Resources for Teaching and					McKinney-Vento Homeless Education Program
Federal	175.0	52.5	30.0%	17.5	
<u>Early Childhood</u>					
Henderson Mercer Warren -ROE 27					Third party monitoring of Early Childhood Block Grant Programs
GRF	793.0	326.5	41.2%	0.0	
Erikson Institute					Early Childhood Social and Emotional Consultation
GRF	1,260.0	510.0	40.5%	0.0	
Erikson Institute					Early Childhood Evaluation
GRF	1,399.4	349.8	25.0%	0.0	
Hupp Information Technologies					Programmer for Early Childhood Block Grant
GRF	78.0	31.5	40.4%	5.7	
<u>English Language Learning</u>					
Illinois Migrant Council					Support & technical assistance to the Migrant Education Program - contract began 9/1/08
Federal	513.0	257.9	50.3%	36.9	
Illinois Department of Human Services					Welcoming Centers
Federal	50.0	12.5	25.0%	12.5	
<u>Special Education Services</u>					
16 Hearing Officers					Impartial Hearing Officers in the local-level due process hearing/Section 14-8.02 of the School Code
Federal	453.0	212.3	46.9%	31.1	
9 Mediation Agreements					IDEA mandates ISBE to offer mediation services
Federal	90.0	38.0	42.2%	3.2	
Joyce Eckrem					Training and on-going staff development for Due Process Hearing Officers
Federal	144.1	51.7	35.9%	10.3	
Hupp Information Technology					Customize the Special Ed Data Systems and add critical indicators for the mediation process
Federal	210.0	99.2	47.2%	8.0	
ROE # 20					Harrisburg Project - Manage software by special education districts and co-ops
Federal	745.7	406.9	54.6%	56.5	
3 Corey H. CPS Monitors					Corey H. Settlement - CPS Monitors
Federal	60.0	16.2	27.0%	3.0	
Gail Imobersteg					Evaluation of Hearing Officers
Federal	50.0	20.8	41.6%	4.2	
Measurement Inc.					Parent Surveys - two cycles of surveys this fiscal year
Federal	61.0	0.0	0.0%	0.0	
Loyola University					Assist in implementation of evaluation of special education programs
GRF	89.2	26.7	29.9%	17.8	

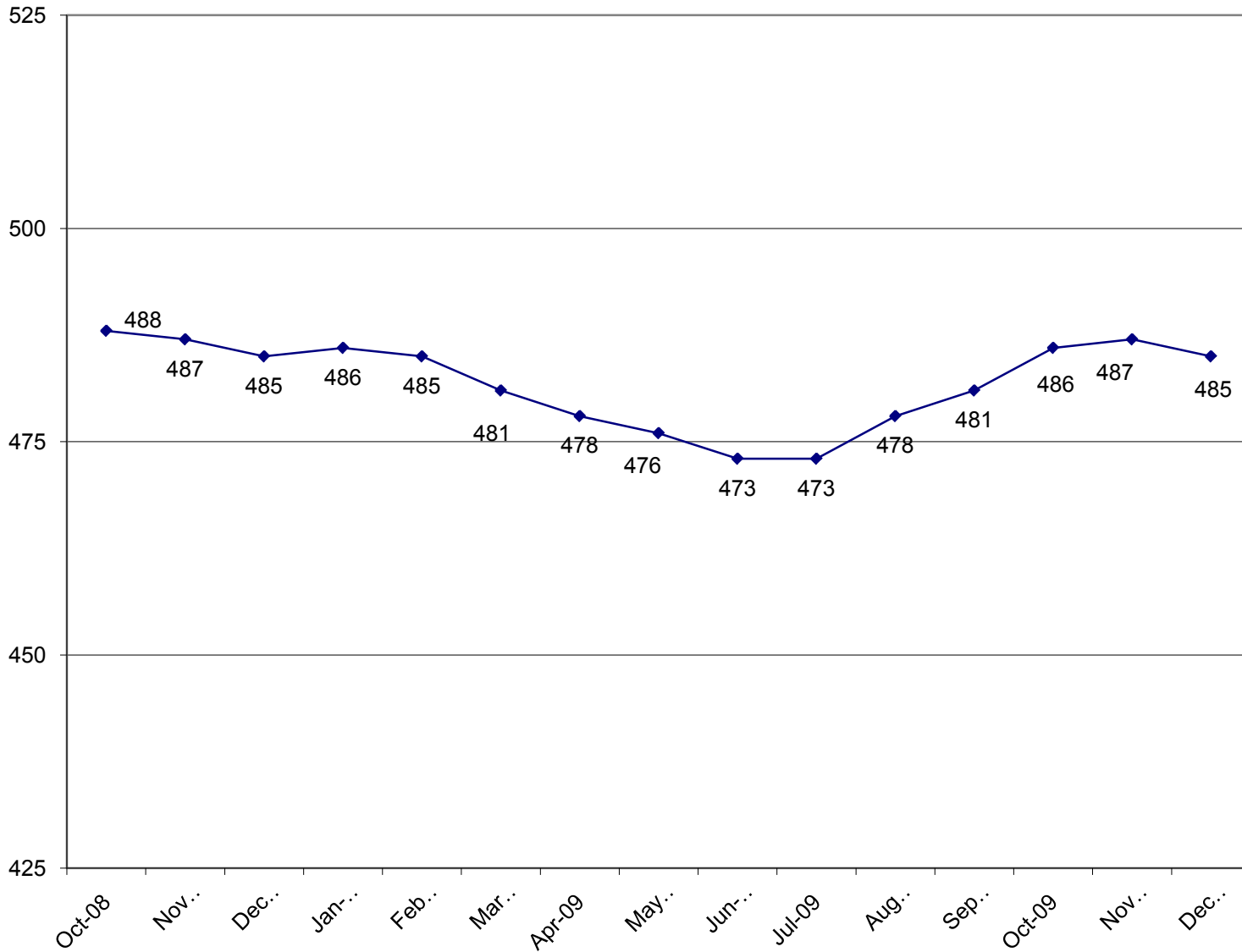
	<u>Funded Amount</u>	<u>Expended Year to Date</u>	<u>% Spent Year to Date</u>	<u>November Expenditures</u>	<u>Description</u>
Levi, Ray & Shoup, Inc. Federal	78.0	2.6	3.3%	2.6	ARRA - Job S020 - Special Education Maintenance of Effort
Peoria County ROE Federal	535.0	230.0	43.0%	51.0	Provide assistance in launching Scaling-up of Evidence Based Practices (SISEP)
<u>Grants &amp; Programs</u>					
Northern Illinois University Federal	143.4	10.5	7.3%	0.0	Comprehensive external evaluation of the 21st Century Program
Learning Point Associates Federal	500.0	166.7	33.3%	83.3	Statewide technical assistance and monitoring for the 21st Century Program
Marla Wiemer Federal	50.0	22.9	45.8%	3.6	Technical Assistance and budget manager for grants and programs
Academic Development, Inc.  Federal	100.7	62.7	62.3%	0.0	Technical assistance to schools/districts in developing evaluations for the content and effectiveness of the parental involvement policy activities and programs for improving the academic quality of schools through the spread of internet technology.
Sangamon County ROE  Federal	70.0	14.0	20.0%	14.0	Provide services in the review, amendment and approval process of NCLB applications and ARRA Title I applications
<u>Assessment</u>					
Metri Tech, Inc. GRF	119.9	60.0	50.0%	10.0	Develop, administer, retrieve, analyze, and score the Consumer Ed Proficiency Test
NCS Pearson (Harcourt) GRF	4,093.7	2,670.6	65.2%	429.7	Formerly Harcourt Contract - Enhanced Statewide Student Assessment System - MY05647
Federal	1,549.4	1,015.8	65.6%	0.0	
University of Illinois GRF	125.0	62.5	50.0%	0.0	Assessment Evaluation
Federal	125.0	0.0	0.0%	0.0	
NCS Pearson, Inc. Federal	2,464.3	1,065.8	43.2%	0.0	IAA Test (MY066410)
Harte-Hanks GRF	77.6	57.7	74.4%	0.0	Third Party Oversight
Federal	180.0	163.5	90.8%	0.0	
Wisconsin University - WIDA Consortium GRF	4,487.9	2,850.4	63.5%	2,107.5	Title III Requirements for the ACCESS test (bilingual). Validated through comparative studies by WIDA Consortia
NCS Pearson, Inc. GRF	8,772.6	7,783.8	88.7%	914.8	Implement ISAT Test and State Assessment Accountability Requirements - MY07645
Federal	4,500.0	0.0	0.0%	0.0	
American College Testing GRF	8,365.2	3,413.0	40.8%	2,275.3	ACT Test - College Entrance Exam
Federal	6,786.6	2,275.3	33.5%	0.0	
Measurement Inc. GRF	3,716.9	1,858.5	50.0%	309.7	ISAT Writing Component

	<u>Funded Amount</u>	<u>Expended Year to Date</u>	<u>% Spent Year to Date</u>	<u>November Expenditures</u>	<u>Description</u>
<u>Educator Certification</u>					
Target Area Development Corp					Grow Your Own Initiative
GRF	215.9	0.0	0.0%	0.0	
Philliber Research Associates					Evaluation of Grow Your Own Initiative
GRF	118.2	47.5	40.2%	9.5	
Brown, Cass, Morgan Scott ROE #46					Contractor will provide programmer for assistance with the Teacher Certification Information System (TCIS)
Other State	70.0	20.0	28.6%	20.0	
<u>Educator and School Development</u>					
Illinois Principals Association					New Principals Mentoring Program
Other State	2,063.0	400.0	19.4%	0.0	
8 Hearing Officers					Certification revocation hearing officers
Other State	322.3	2.2	0.7%	0.0	
Iroquois-Kankakee County ROE					National Board of Professional Teaching Standards to serve schools outside City of Chicago - Component 2
Federal	158.9	38.9	24.5%	0.0	
Illinois State University					National Board of Professional Teaching
Federal	389.3	116.7	30.0%	50.0	
University of Illinois					New Illinois Teacher Collaborative
GRF	225.0	103.6	46.0%	0.0	
Other State	300.0	103.6	34.5%	103.6	
DuPage County ROE					Private Business and Vocational School Services support
GRF	50.0	13.2	26.4%	0.0	
<u>Standards and Assessments</u>					
Ashbaugh & Associates, Inc.					Provide programmer for the Illinois Longitudinal Data System
GRF	167.8	13.6	8.1%	13.6	
IL Board of Higher Education					Integrate infrastructure and data systems of IBHE and ISBE for IL Longitudinal Data System
Other State	142.0	50.0	35.2%	50.0	
<u>Fiscal and Procurement</u>					
Workforce Services (Jill Bishop)					Translation of documents from English to other languages
GRF	20.0	0.0	0.0%	0.0	
Federal	193.5	0.7	0.4%	0.0	
<u>Funding &amp; Disbursements</u>					
MTW Solutions, LLC					Develop mechanism to extract data from e-Grants System
GRF	9.0	0.0	0.0%	0.0	
Federal	51.0	0.0	0.0%	0.0	
<u>Nutrition Programs</u>					
Southern Illinois University					Evaluation and reviews for School Meals Initiative (SMI)
Federal	195.5	20.6	10.5%	20.6	
Legal Resolve, Inc.					Administrative Hearing Officer for Child Care Food Program
Federal	125.0	33.2	26.6%	5.3	
Department of Public Health					Summer Food Inspection Program
Federal	95.0	18.0	18.9%	0.0	
	69,601.8	32,166.5		7,314.9	

	<u>Funded Amount</u>	<u>Expended Year to Date</u>	<u>% Spent Year to Date</u>	<u>November Expenditures</u>	<u>Description</u>
<b>Grants Breakdown:</b>					
Title I - Low Income	750,000.0	164,745.7	22.0%	42,846.7	Formula
Child Nutrition	675,000.0	241,222.7	35.7%	55,452.9	Formula - Reimbursement
IDEA	570,000.0	184,515.4	32.4%	28,090.6	Formula
Title I - Low Income - ARRA	544,464.5	10,294.3	1.9%	9,532.5	Formula - Federal Stimulus
IDEA - Flow Through ARRA	506,479.8	74,306.8	14.7%	30,282.9	Formula - Federal Stimulus
Spec Ed Personnel	459,600.0	198,942.4	43.3%	91,448.3	Formula
Transportation Spec Ed	429,700.0	140,272.7	32.6%	72,605.5	Formula
Transportation Reg/Voc	351,100.0	172,897.5	49.2%	80,968.9	Formula
Spec Ed Extraordinary	334,236.8	118,319.8	35.4%	59,159.9	Mandated Categorical-Supplemental
Early Childhood Block	191,508.0	85,806.4	44.8%	4,521.3	Block grant for Pre-K, parent training and prevention initiative
Spec Ed Private Facility Tuition	181,100.0	134,205.7	74.1%	23,447.3	Formula
Title II - Teacher Quality	135,000.0	33,518.9	24.8%	8,530.0	Formula
Early Childhood - ARRA	131,472.7	57,562.4	43.8%	5,050.2	Block grant for Pre-K, parent training and prevention initiative
Spec Ed Orphanage	120,200.0	77,095.5	64.1%	17,466.2	Formula
Reading Imp. Block Grant	68,525.7	24,527.5	35.8%	5,046.4	Formula
Bilingual Education	68,086.8	7,039.7	10.3%	0.0	Mandated Categorical
Title I - Reading First	60,000.0	4,977.0	8.3%	1,120.4	Competitive and formula grants
Title IV - 21st Century	55,000.0	12,004.1	21.8%	3,337.2	Competitive
Voc Ed - Federal	55,000.0	19,941.6	36.3%	2,743.0	Formula and Competitive - to improve student academic and career skills
Title III - English Language Acq	40,000.0	5,303.5	13.3%	3,426.9	Grant
Textbook Loan - Reappropriation	39,665.9	34,227.8	86.3%	4,019.9	Payment for textbooks purchased during previous year
Vocational Education - State	38,562.1	20,866.9	54.1%	3,524.7	Formula
State Free Lunch and Breakfast	26,300.0	18,113.4	68.9%	1,393.3	Mandated Categorical - Reimbursement
Technology Literacy - ARRA	25,198.3	0.0	0.0%	0.0	Competitive - federal Stimulus
Preschool - Spec Ed	25,000.0	5,523.2	22.1%	1,091.4	Formula - special education, 3-5 year-olds
School Construction - Cap Dev	25,000.0	0.0	0.0%	0.0	Grants
Summer Bridges	20,715.3	13,334.3	64.4%	581.7	Grants to districts (based on ISAT reading scores)
Technology Literacy	20,000.0	3,748.6	18.7%	378.0	Competitive and non-competitive grants to school districts
ADA Sch. Safety and Ed. Bl.	18,710.3	9,355.2	50.0%	3.7	Formula
Preschool - Spec Ed - ARRA	18,311.5	3,022.4	16.5%	690.6	Formula - Federal Stimulus
Truant/Dropout/Optional Education	18,070.3	12,099.5	67.0%	1,591.3	Competitive - at-risk students/dropout prevention
Driver Education	17,929.6	8,960.8	50.0%	4,480.5	Reimbursement
Alternative Ed/Reg Safe Schools	16,682.0	7,642.4	45.8%	1,938.1	Formula
Title IV - Safe and Drug Free	15,000.0	2,852.5	19.0%	1,105.7	Formula
Orphanage Tuition	13,000.0	6,076.3	46.7%	2,392.2	Reimbursement to school districts for children residing in orphanages
Spec Ed Summer School	11,700.0	11,602.5	99.2%	5,237.7	Formula - Special ed students enrolled in summer sessions
Teachers/Admin. Mentoring	9,276.4	0.0	0.0%	0.0	Grants
ROE Salaries	9,100.0	359.1	3.9%	359.1	Salaries for ROE's
Title II Math/Science Partnerships	9,000.0	2,329.3	25.9%	620.6	Formula
Title V - Innovative Programs	8,000.0	9.2	0.1%	0.0	Formula
Charter Schools - Federal	6,000.0	254.8	4.2%	8.7	Competitive
Nat'l Board Certification	5,742.5	0.0	0.0%	0.0	Grants
After School Matters	5,000.0	2,135.4	42.7%	0.0	Grant to After School Matters
School Tech. Rev. Loan	5,000.0	0.0	0.0%	0.0	Loans to schools to implement technology
Voc Ed - Federal Tech Prep	5,000.0	1,735.8	34.7%	115.1	Grants - assists students in achieving learning/occupational skills standards
Congressional Earmarks	4,945.5	0.0	0.0%	0.0	Grants
ROE School Services	4,773.4	3,020.8	63.3%	413.4	Formula - ROE Operations
Spec. Congressional Initiatives	4,220.5	0.0	0.0%	0.0	Grants
Child Nutrition - ARRA	3,657.3	3,537.0	96.7%	110.2	Formula - Federal Stimulus
Re-Enrolling Student Program	3,600.0	2,000.0	55.6%	0.0	Grant to Alternative Schools Network
Philip Rock Center	3,577.8	1,900.0	53.1%	0.0	Targeted Initiative
Reorganization Incentive	3,400.0	3,022.2	88.9%	0.0	Grants to districts to encourage reorganization through consolidation/annexation
McKinney Homeless Ed	3,250.0	1,422.7	43.8%	0.0	Competitive grants to school districts
IDEA Part D	3,200.0	949.7	29.7%	100.4	Reimbursement
Agriculture Education	3,043.1	1,924.6	63.2%	277.8	Grants to school districts
Grow Your Own Teachers	2,808.0	1,009.4	35.9%	0.0	Grants
Technology for Success -State	2,719.7	1,387.8	51.0%	229.8	Grants
McKinney Homeless Ed - ARRA	2,581.6	1,621.8	62.8%	0.0	Formula - Federal Stimulus
Learn & Serve America	2,500.0	78.3	3.1%	11.0	Competitive grants
Children's Mental Health Partner	2,333.8	1,330.2	57.0%	1,295.0	Grants

	<u>Funded Amount</u>	<u>Expended Year to Date</u>	<u>% Spent Year to Date</u>	<u>November Expenditures</u>	<u>Description</u>
Advanced Placement Fee	2,000.0	1,192.8	59.6%	975.2	Fee reimbursement for Adv Placement Exam and Int'l Baccalaureate exam
Arts & Foreign Language	2,000.0	828.0	41.4%	257.2	Grants
ONPAR	2,000.0	787.5	39.4%	0.0	Grant
Standards Assessment & Acct	1,646.4	0.0	0.0%	0.0	Grants for K-6 Arts, Learn Improve, Learning Standards, Student/Teacher Assessment
Title VI-Flex. & Acct Rural Education	1,500.0	87.7	5.8%	75.6	Grants to school districts
Mat'ls for the Visually Impaired	1,421.1	810.0	57.0%	0.0	Targeted Init. - with The Chicago Lighthouse for People who are Blind or Visually Impaired
Temporary Relocation	1,400.0	498.3	35.6%	0.0	Formula grants for school emergency relocation
Classroom Cubed	1,000.0	0.0	0.0%	0.0	Grant to Rock Island Sch Dist 41
Emergency Financial Assistance	1,000.0	21.9	2.2%	0.0	Formula and loans to school districts
Transition to Teaching	1,000.0	0.0	0.0%	0.0	Grant to Illinois Resource Center
Recording - Blind and Dyslexic	816.6	600.0	73.5%	0.0	Grant to increase achievement of students with visual impairments
Advanced Placement Classes	811.9	463.5	57.1%	113.8	Grants
Deaf/Blind	450.0	113.6	25.2%	27.0	Grant to Philip J. Rock Center
Striving Readers	435.3	0.0	0.0%	0.0	Grants
IDEA Model Outreach	400.0	0.0	0.0%	0.0	Competitive
Mental Health - Federal	400.0	0.0	0.0%	0.0	Grant
Illinois Breakfast Incentive	361.8	106.4	29.4%	0.0	Reimbursement and grant to public and private schools and child-care institutions
Reorg Incentive Feasibility Stdy	300.0	0.0	0.0%	0.0	Grants
Teach America	225.0	122.8	54.6%	0.0	Grant for Teach for America
Tax Equivalent Grants	222.6	222.6	100.0%	0.0	Grants
Supervisory Expense	102.0	102.0	100.0%	0.0	Supervisory Expense
Autism Training & Tech Assist.	100.0	0.0	0.0%	0.0	Grants to the IL Autism Training & Tech Assistance Program
ROE Bus Driver Training	70.0	70.0	100.0%	0.0	ROE Bus Driver Training
Charter Schools-Rev Loan Fund	20.0	0.0	0.0%	0.0	Other/Repayment of loans

ILLINOIS STATE BOARD OF EDUCATION  
HEADCOUNT AS OF DECEMBER 2009



**ILLINOIS STATE BOARD OF EDUCATION  
AGENCY STAFF DETAIL AS OF DECEMBER 2009**

	Mgmt.	Prof.	Support	GRF	Non-GRF	Total
<b>SUPERINTENDENT'S OFFICE</b>						
State Superintendent	1	0	3	4	0	4
Board Services	0	1	1	2	0	2
General Counsel	2	10	2	13	1	14
Governmental Relations	0	2	0	2	0	2
Internal Audit	<u>1</u>	<u>3</u>	<u>1</u>	<u>3</u>	<u>2</u>	<u>5</u>
Sub-Total	4	16	7	24	3	27
<b>HUMAN RESOURCES</b>						
Human Resources	<u>3</u>	<u>5</u>	<u>6</u>	<u>12</u>	<u>2</u>	<u>14</u>
Sub-Total	3	5	6	12	2	14
<b>PUBLIC INFORMATION</b>						
Public Information	<u>1</u>	<u>6</u>	<u>0</u>	<u>6</u>	<u>1</u>	<u>7</u>
Sub-Total	1	6	0	6	1	7
<b>SPECIAL EDUCATION SERVICES</b>						
Special Education Admin.	1	0	1	0	2	2
Special Education Services - Spfld.	2	26	5	0	33	33
Special Education Services - Chgo.	<u>2</u>	<u>22</u>	<u>2</u>	<u>0</u>	<u>26</u>	<u>26</u>
Sub-Total	5	48	8	0	61	61
<b>EDUCATIONAL PROGRAMS</b>						
Career & Technical Education	1	8	2	8	3	11
Early Childhood	1	9	2	8	4	12
English Language Learning	1	9	1	7	4	11
Grants and Programs	<u>2</u>	<u>19</u>	<u>3</u>	<u>2</u>	<u>22</u>	<u>24</u>
Sub-Total	5	45	8	25	33	58
<b>STANDARDS &amp; ASSESSMENTS</b>						
Standards & Assessment Admin.	1	1	1	3	6	9
Data Analysis & Progress Reporting	1	8	2	9	2	11
Assessment	1	13	2	10	0	10
Curriculum & Instruction	<u>2</u>	<u>11</u>	<u>4</u>	<u>7</u>	<u>10</u>	<u>17</u>
	5	33	9	29	18	47

	Mgmt.	Prof.	Support	GRF	Non-GRF	Total
<b>SCHOOL SUPPORT SERVICES FOR ALL SCHOOLS</b>						
School Support Admin	1	0	1	2	0	2
Educator Certification	1	9	11	19	2	21
Educator & School Development	2	17	10	22	7	29
Nutrition Programs	<u>2</u>	<u>38</u>	<u>4</u>	<u>4</u>	<u>40</u>	<u>44</u>
	6	64	26	47	49	96
<b>FISCAL SUPPORT SERVICES</b>						
Fiscal Support Services Admin.	1	0	0	1	0	1
Budget & Financial Management	1	6	1	7	1	8
Data Systems	3	29	2	19	15	34
Technology Support	1	18	2	14	7	21
Fiscal & Procurement	2	12	6	12	8	20
Administrative Services	1	3	13	14	3	17
Funding and Disbursements	2	21	10	16	17	33
School Business Services	2	13	2	16	1	17
External Assurance	<u>1</u>	<u>21</u>	<u>2</u>	<u>7</u>	<u>17</u>	<u>24</u>
Sub-Total	14	123	38	106	69	175
<b>GRAND TOTAL, ALL CENTERS</b>	<b>43</b>	<b>340</b>	<b>102</b>	<b>249</b>	<b>236</b>	<b>485</b>
	9%	70%	21%	51%	49%	100%

**ILLINOIS STATE BOARD OF EDUCATION**  
**Personnel Transactions As of December 2009**

**Transaction Data:**

	<u>FY01</u>	<u>FY02</u>	<u>FY03</u>	<u>FY04</u>	<u>FY05</u>	<u>FY06</u>	<u>FY07</u>	<u>FY08</u>	<u>FY09</u>	<u>FY10</u>
<b>Begin Year</b>	787	739	650	522	471	487	478	463	475	473
<b>Hire Externally</b>	27	5	29	20	77	37	44	54	30	31
<b>Recall</b>	0	0	11	19	4	4	0	1	1	0
<b>Retire</b>	-35	-37	-128	-34	-30	-25	-20	-19	-15	-11
<b>Resign</b>	-35	-21	-13	-24	-31	-17	-33	-19	-12	-6
<b>Discharge</b>	-2	-9	-2	-2	-4	-7	-5	-4	-5	-2
<b>Layoff</b>	0	-25	-22	-30	0	0	0	0	0	0
<b>Death</b>	-3	-2	-3	0	0	-1	-1	0	0	0
<b>Other</b>	<u>0</u>	<u>0</u>	<u>0</u>	<u>0</u>	<u>0</u>	<u>0</u>	<u>0</u>	<u>-1</u>	<u>-1</u>	<u>0</u>
<b>End Year</b>	739	650	522	471	487	478	463	475	473	485